

Girl's Nina Coat Hood Add On

Print at 100% Do Not Scale

Follow basic hood assembly instructions then finish coat as instructed in pattern.



Test
Square
1"X1"

- 10
- 8
- 7
- 6
- 5
- 4T
- 3T
- 2T
- 12-18m

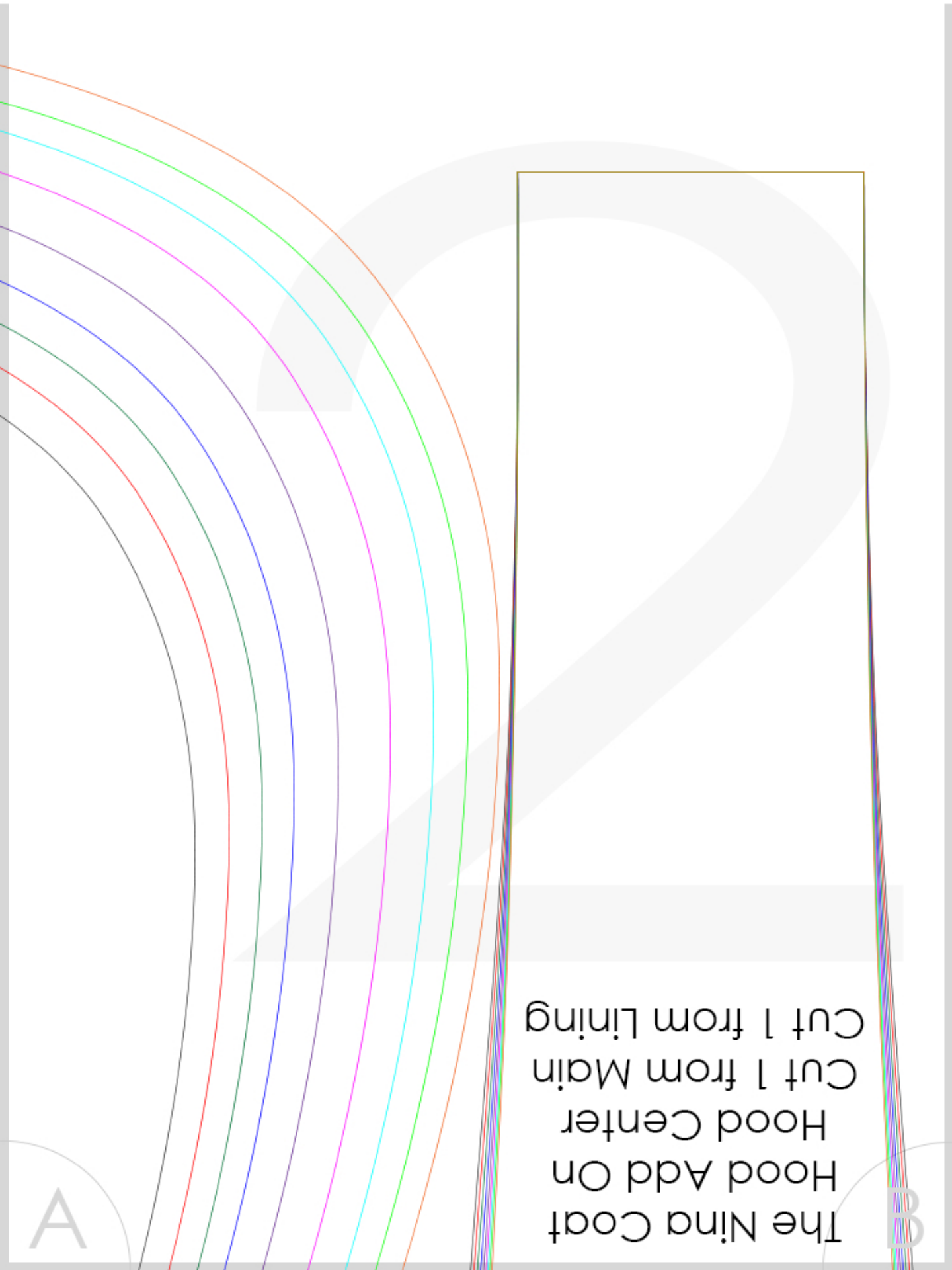
Grainline

The Nina Coat Hood Add On



Hood Side
Cut 2 from Main
Cut 2 From Lining

A



The Ninja Coat
Hood Add On
Hood Center
Cut 1 from Main
Cut 1 from Lining

A

B



A

B



← Grainline →

12-18m

2T

3T

4T

5

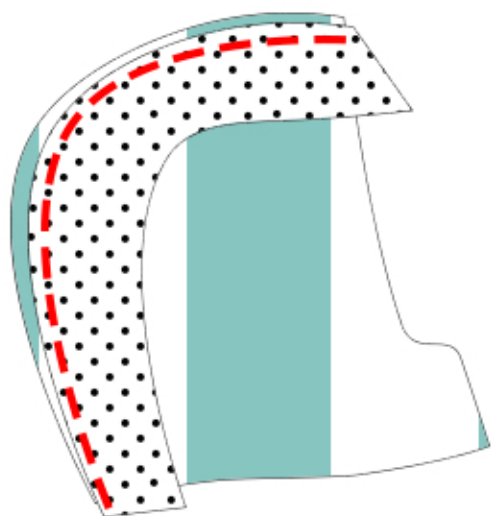
6

7

8

10

Sewing the Hood option

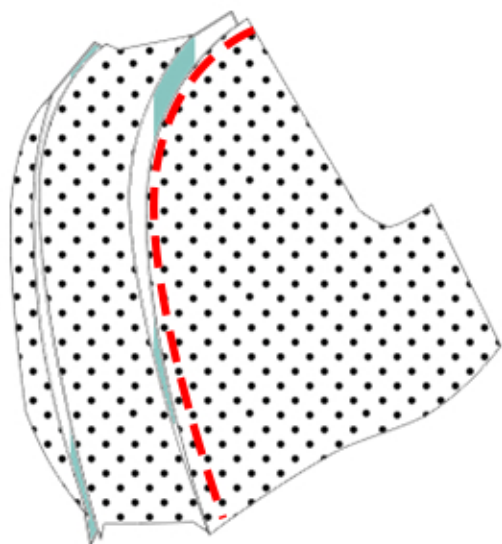


Step 1:

With right sides together, sew the center hood to one side hood piece, along the neck curve.

Clip notches in the curve and press seam open flat.

Top stitch seam allowance in place if desired.



Step 2:

With right sides together, sew the other side hood piece to the other edge of the center hood piece.

Clip notches in the curve and press the seam open flat.

Top stitch seam allowance in place if desired.

Repeat steps 1 & 2 for the lining as well.

In sewing the coat, sew the hood to the jacket subbing it for the collar.