

Shwin & Shwin



THE

NEOPRENE

Peplum Top

Free PDF Pattern

Print at 100% or NO Scale

Cut On Fold

For Peplum Pieces
Cut 2 Rectangles
28"X11"

Fold Line

Stretch

Neoprene Peplum Top



Size 6

Neck Band

Cut 1 on fold from rib knit

Neoprene Peplum Top

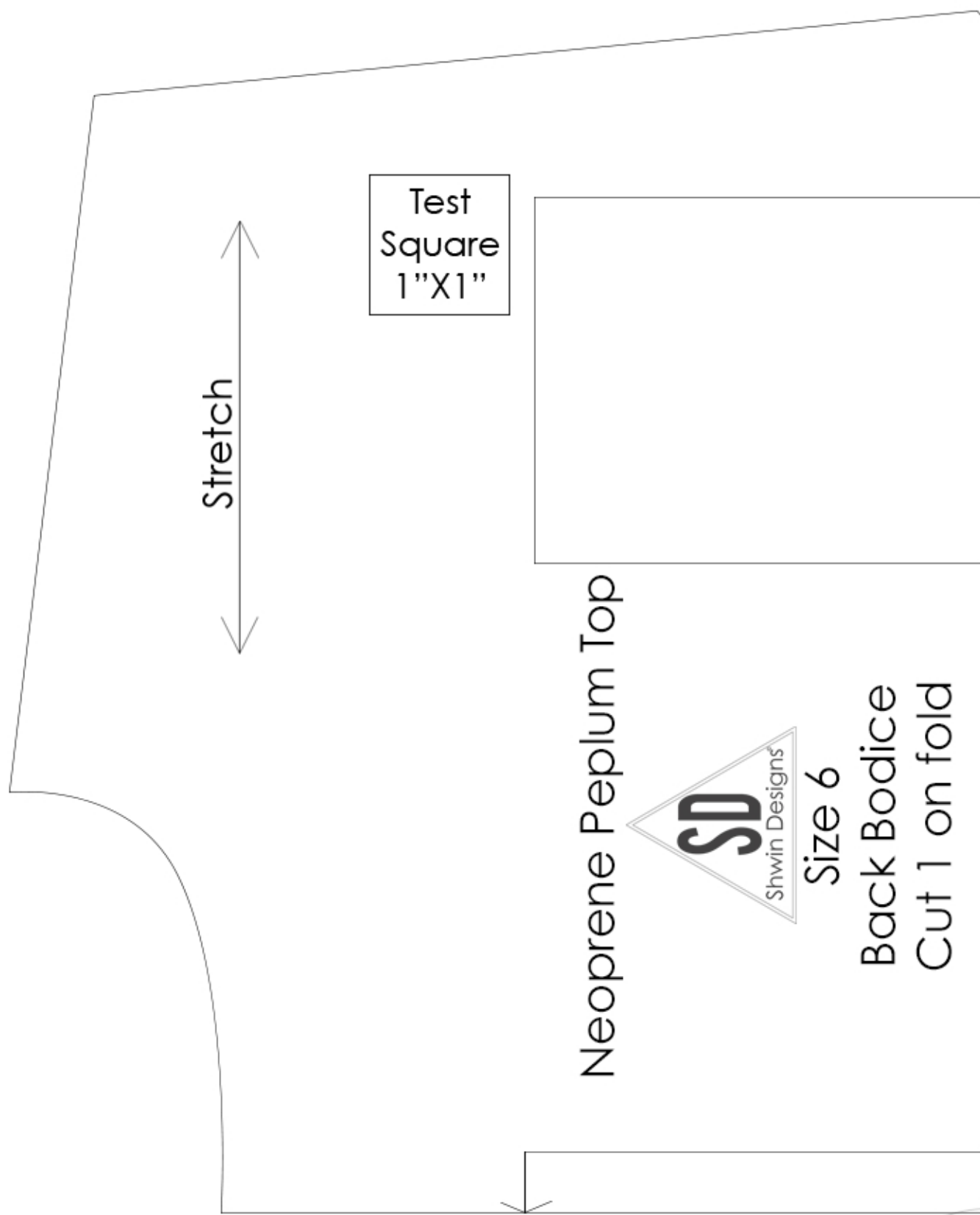
Stretch



Size 6
Sleeve Band
Cut 2

Cut On Fold

A



Test
Square
1"X1"

Neoprene Peplum Top



Size 6
Back Bodice
Cut 1 on fold



The diagram shows a pattern piece for a neoprene peplum top. It features a curved neckline, a fitted bodice, and a flared peplum skirt. A horizontal double-headed arrow labeled 'Stretch' is positioned across the bodice area. A vertical line on the left side is labeled 'A'. A logo for 'Shwin Designs' with the initials 'SD' is located in the center of the bodice area. Below the logo, the text 'Size 6' is written. Further down, the text 'Front Bodice' and 'Cut 1 on fold' is displayed. A rectangular box is present at the bottom of the page.

Stretch

Neoprene Peplum Top

SD
Shwin Designs

Size 6

Front Bodice

Cut 1 on fold

A