

Pajama Pants & Top Pattern

Pattern by: Shwin&Shwin

Instructions:

Print at 100%

Do not scale

Trim edges away at grey lines.

Tape pages together at grey lines following the assembly guide.

Cut pattern.

*Front and back top pieces and facing pieces are all in one pattern piece tracing or printing extra copies is best

Cut pieces should be as follows:

2 front Top pieces

1 back Top piece

2 front facing pieces

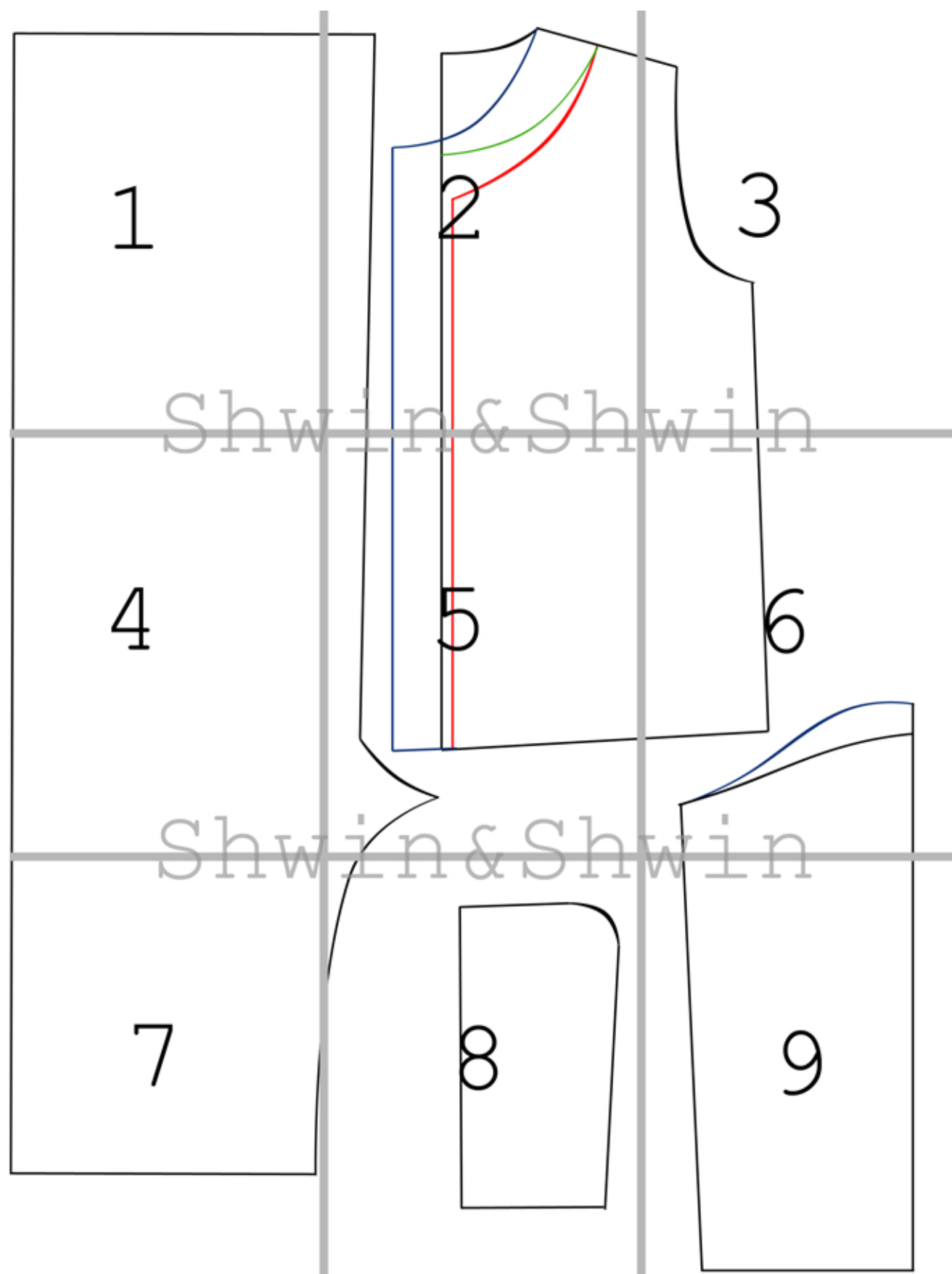
1 back facing piece

2 sleeves

2 collars

2 pant legs

Pajama Assembly Guide



1

Test square
1"X1"

Pajama

Pajama

Pajama Pants Pattern
Designed and Drafted by:
Shwin&Shwin
Copyright 2012
Not to be sold, copied, or shared.
For personal use ONLY

2

Pants

Fold Line

Pajama Top Front and Back

For back cut 1 on black fold line
For front cut 2 not on fold at blue line

Cut front facing following red line
Cut back facing following green line

Pattern Designed and Drafted
By Shwin&Shwin
Copyright 2012
Not to be sold, copied or shared



3

Pajama-Rama

Pattern Designed and Drafted

By Shwin&Shwin

Copyright 2012

Not to be sold, copied or shared

For personal use ONLY

Pajama Top

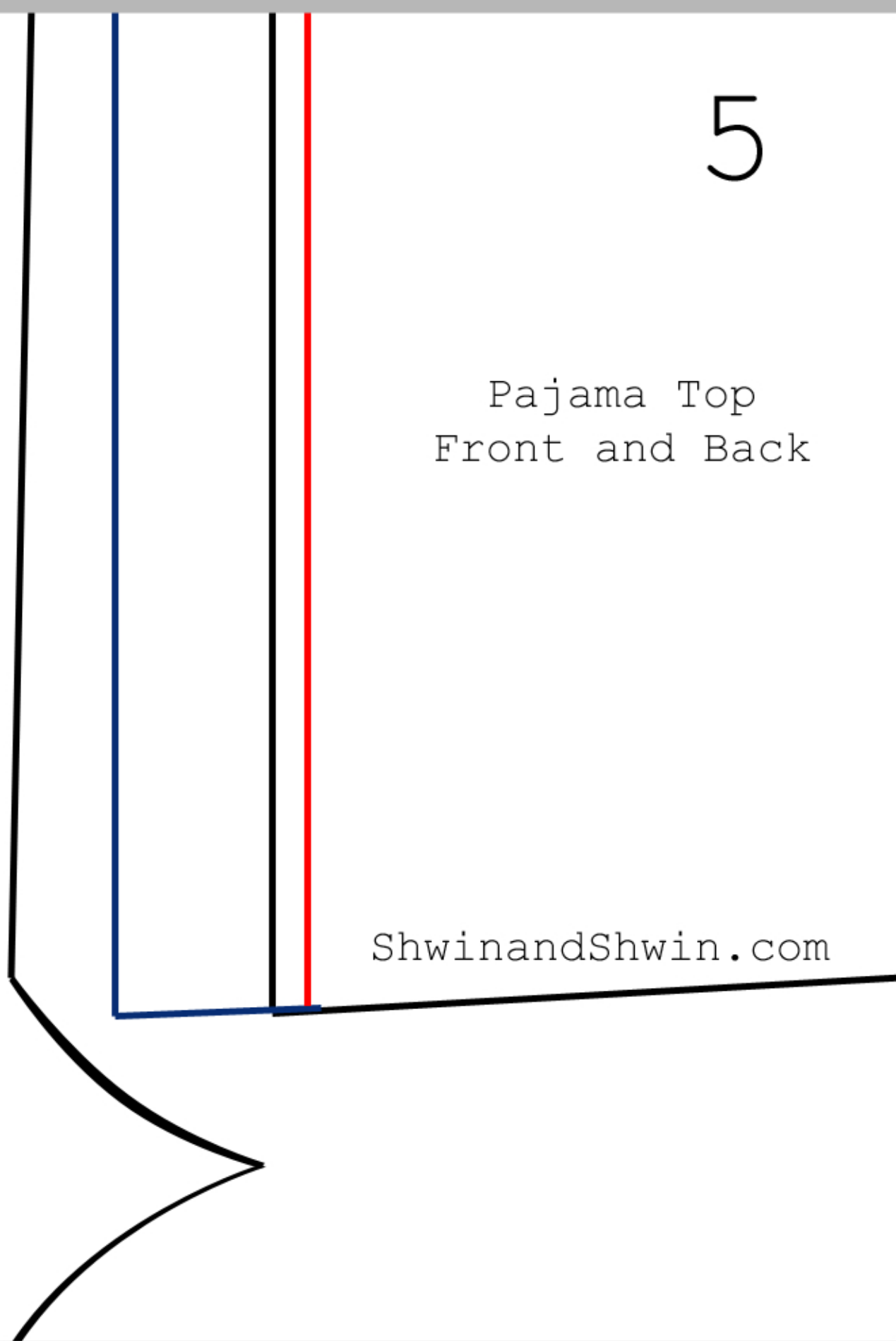
4

Paĵama Pants Pattern
Cut 2 on fold
Designed and Drafted by:
Shwin&Shwin

5

Pajama Top
Front and Back

ShwinandShwin.com



6

Pattern for 4T
3/8" seam allowance

Pajama Top

Girl Sleeve

Boy Sleeve

Pajama Sleeve

Fold Line

Paḷama Pants Pattern

shwɪnandshwɪn.com

Pajama Top Collar
Cut 2 on Fold

Fold Line

Shwinandshwin.com

9

Fold Line

Pajama Sleeve
Cut 2 on Fold

Follow black line for boys
Follow Blue line for girls
(pleated sleeve)