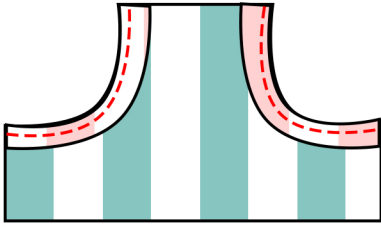


Ringo Raglan Pocket Add-On

*If you are adding the pocket, add it to the front bodice before beginning.

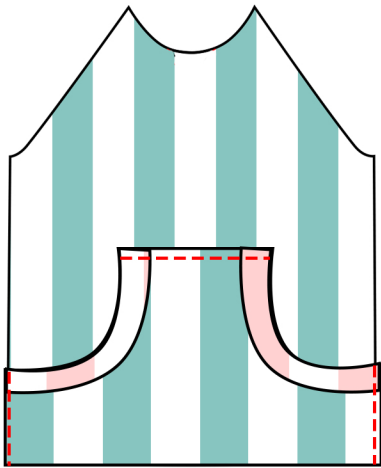


Step 1:

Fold the pocket bands in half along the narrow side so the wrong sides are together. Then sew the band right sides together along the curve of the pockets.

Stretch the band to fit while sewing.

Repeat for both sides.

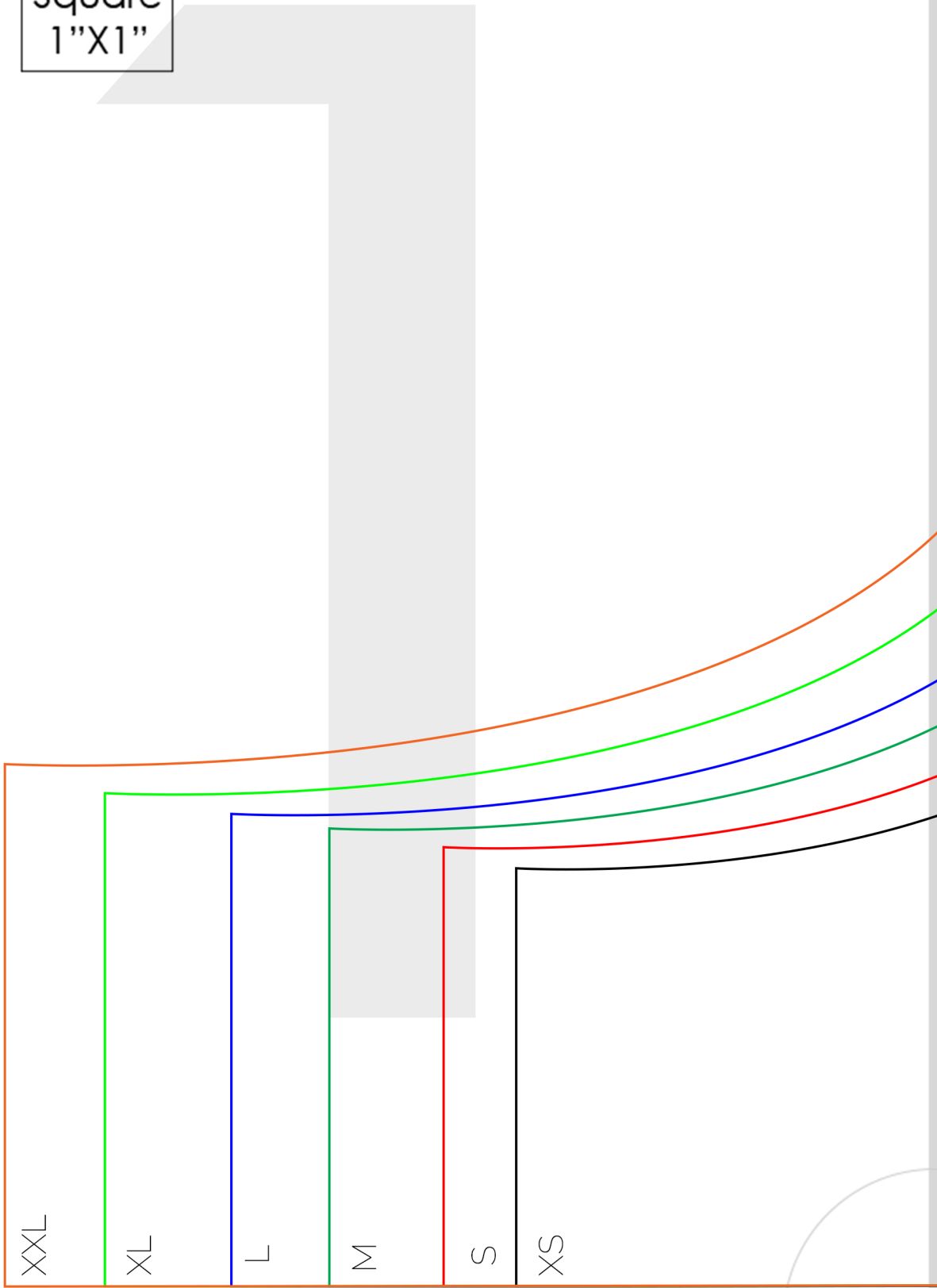
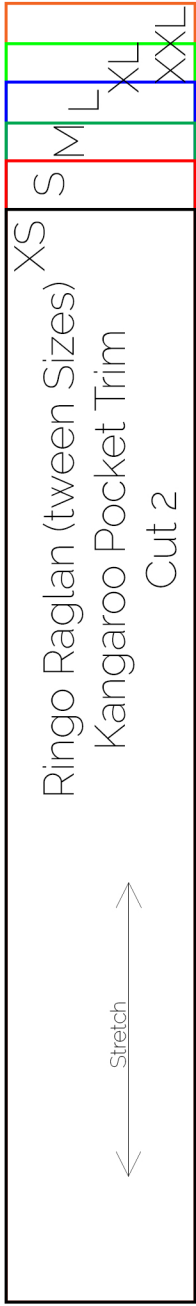


Step 2:

Then fold the top edge of the pocket under by $\frac{3}{8}$ "

Sew the pocket to the front bodice along the top straight edge and the sides, then make the rest of the top as instructed.

Test
Square
1"X1"



Stretch

Fold Line

Shwin Designs

B Side Patterns

For Tweens & Teens

Ringo Raglan
Kangaroo Pocket Add-on
Cut one on fold

