

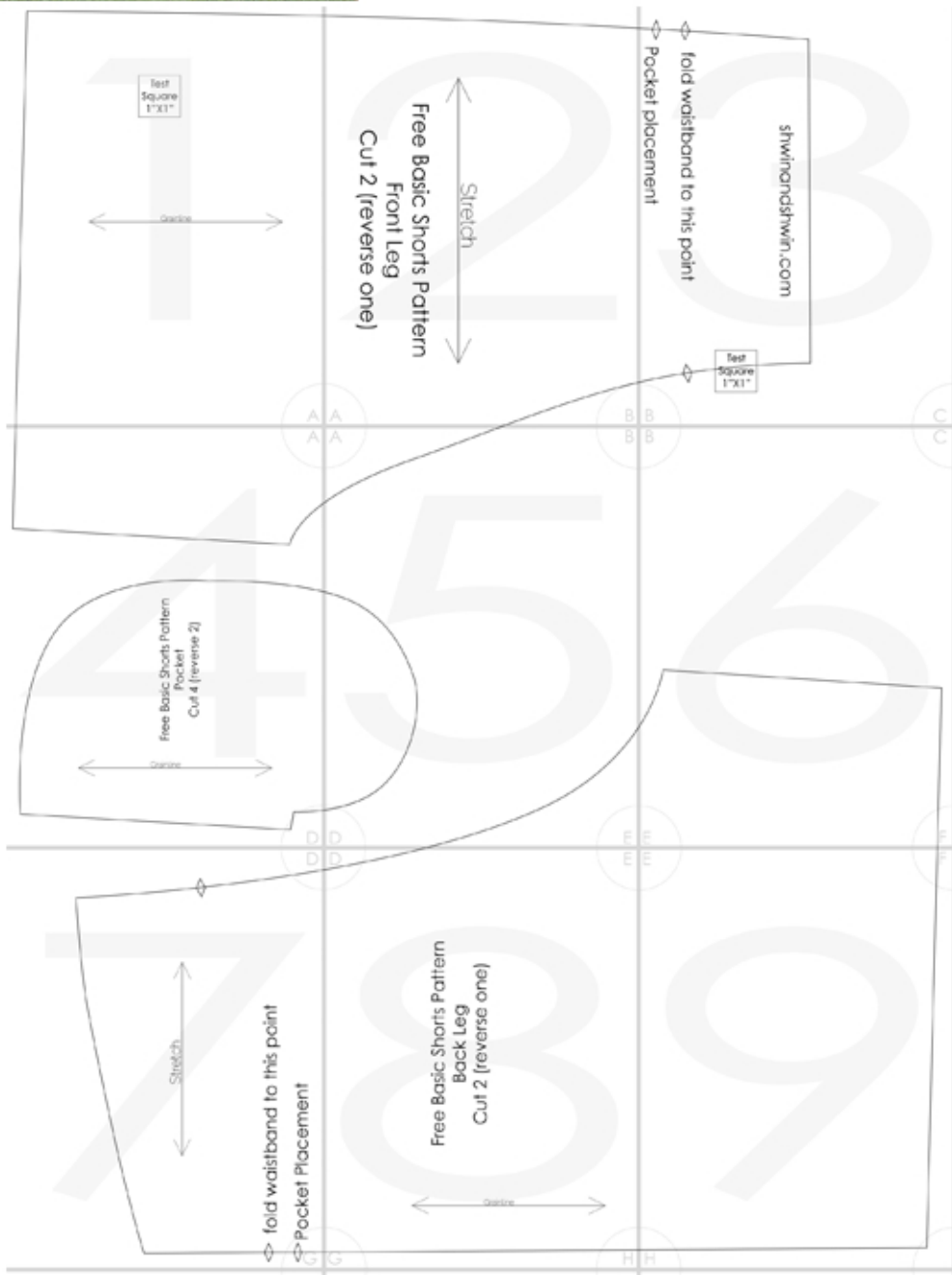


# Free Basic Shorts Pattern

shwinandshwin.com

Boys Size 10  
25" Waist 31" Hip 58" Height

Finished inseam 5"





Test  
Square  
1"X1"

The diagram shows a light gray vertical rectangular area representing a wood grain. A white square is positioned in the upper portion of this area. A horizontal double-headed arrow spans the width of the gray area, with the word 'Grainline' centered above it. The entire diagram is enclosed in a thin black border.

Grainline



Stretch

Free Basic Shorts Pattern  
Front Leg  
Cut 2 (reverse one)

A

B

shwinandshwin.com

fold waistband to this point

Pocket placement

Test  
Square  
1"X1"

B

C

A

Free Basic Shorts Pattern  
Pocket  
Cut 4 (reverse 2)



D

A

B

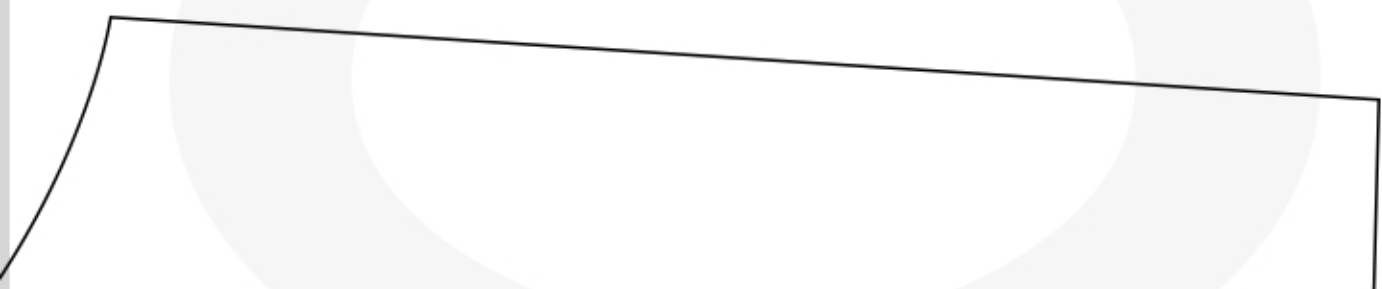
D

E



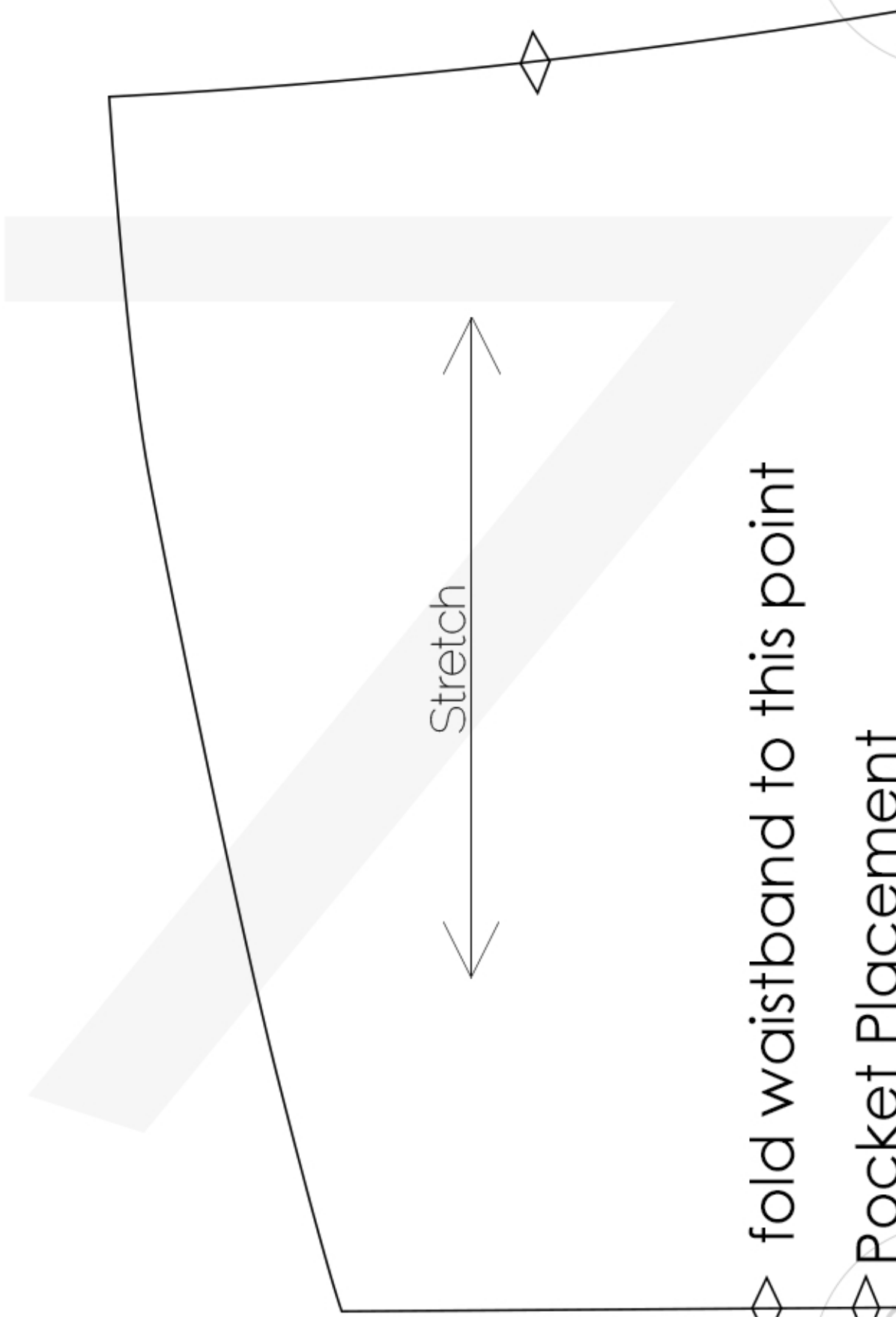
B

C



E

F



◇ fold waistband to this point

◇ Pocket Placement



Free Basic Shorts Pattern  
Back Leg  
Cut 2 (reverse one)



D

E

G

H

E

F



H