



Super Hero Doll Pattern

By Shwin Designs

Supplies Needed:

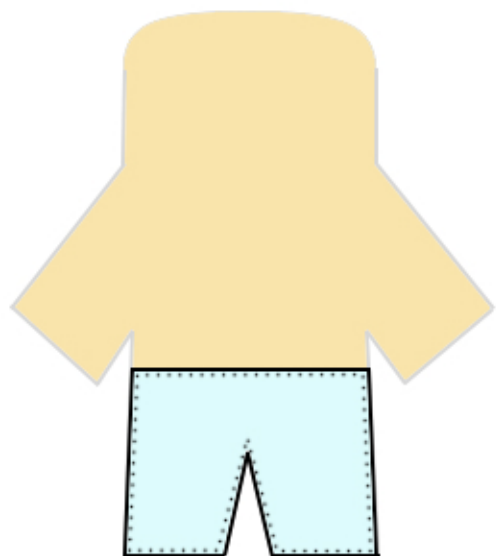
- 1/4 yard of Fleece Fabric (various colors depending on design choice)
- Scraps of Felt (optional)
- 2- 3/8" buttons for eyes
- Fiber Fill
- Needle and thread for hand sewing

Pattern Notes:

Use only fleece, felt or knit fabrics that don't fray since edges are not finished.

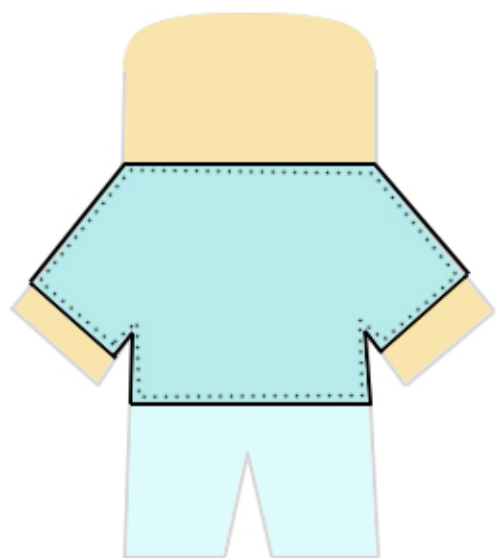
You can easily design any super hero you would like. Make a custom design just for your child. Let them design it themselves even.

Sewing the Super Hero Doll Pattern



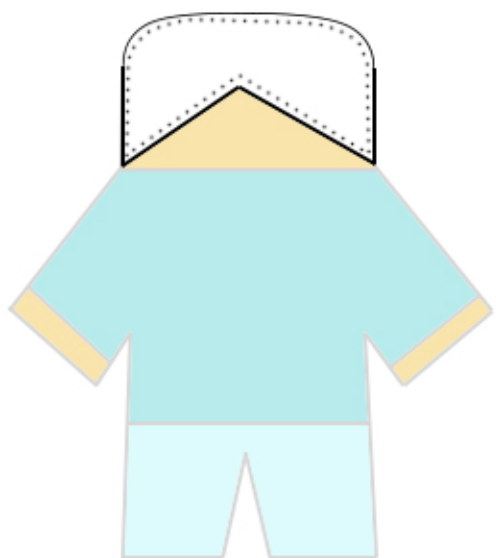
Step 1:

Take the front body piece. Sew the pants to the front matching up the legs. Sew all around the edges.



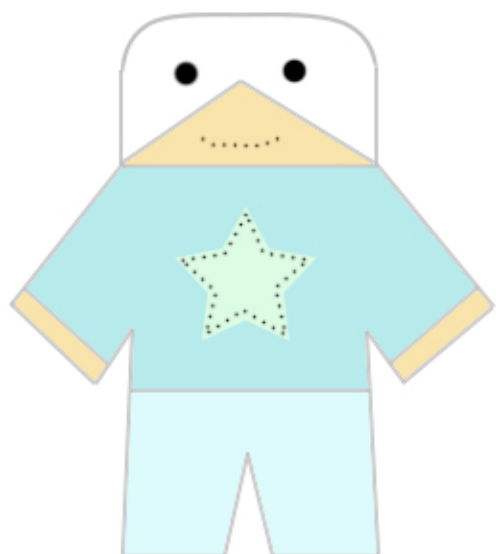
Step 2:

Next sew the shirt to the front overlapping the top of the pants. Sew around all the edges.



Step 3:

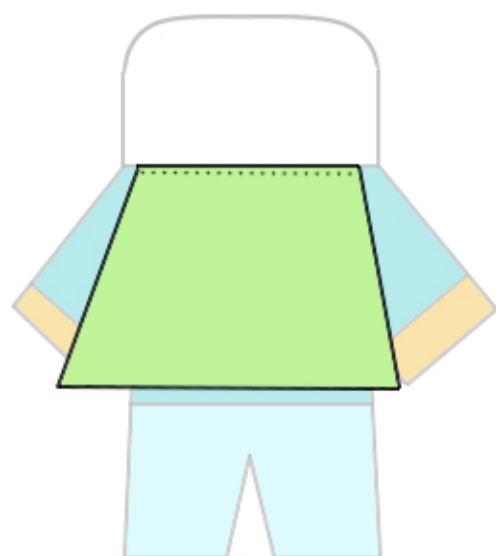
Sew the front hero cap, or "Thor" hat to the head by sewing around the edges.



Step 4:

Add details to the front such as stitching on a mouth and two buttons for eyes.

Add an optional star on the chest or any other desired details.

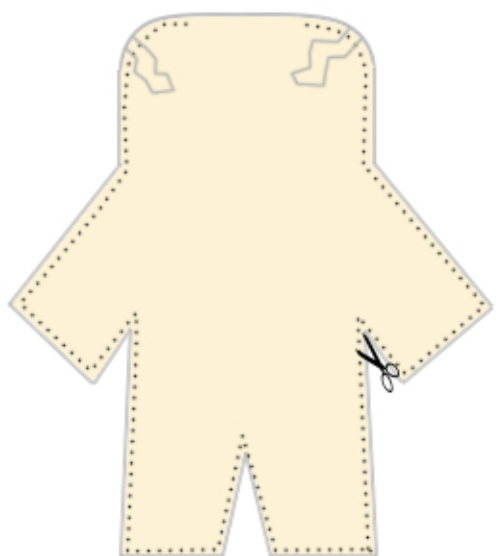


Step 5:

Sew the shirt, pants and hat to the back of the bodice the same way you did the front.

If you are using the Hero Cap sew the back piece on.

Sew the cape piece along the top to the neckline.



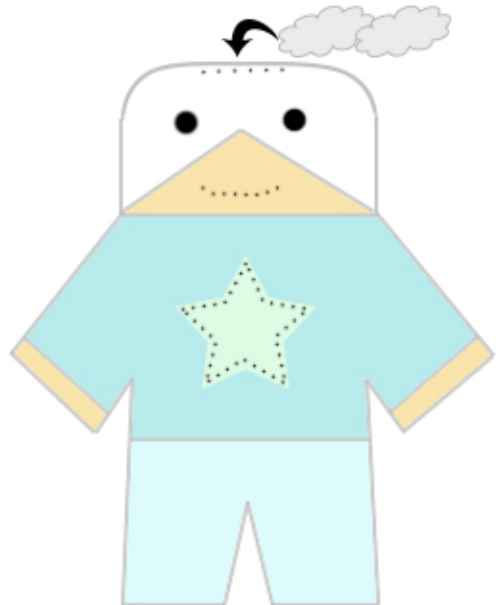
Step 6:

With right sides together sew the front and back body pieces together. Leave a 1.5" opening along the top.

Be careful not to catch the cape when sewing.

Clip all the corners and clip notches into the points at the underarm and crotch.

If adding cap "ears" sew add them here by placing them between the two layers



Step 7:

Turn the doll right side out.

Fill with stuffing through the top opening.

Then hand stitch the top opening closed.

Then you are done!



Style Options

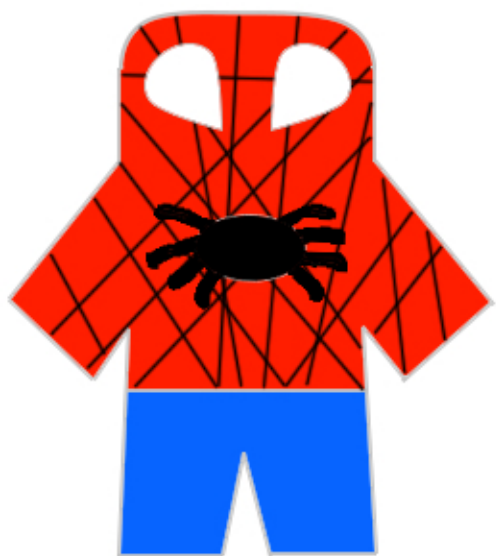
It's possible to create several popular super heros.

“Thor” Style:

For the “Thor” style use the pattern pieces provided for the shirt, and vest details.

Sew the pants on as usual then sew the shirt on over. Add the vest details. Use the “Thor” style cap for the front and back.

You can add as many extra details as you like, such as a belt, wrist bands, boots, or even hair.



“Spider Man” Style:

Cut the body from red material.

Add pant pieces as directed. Then top stitch with black thread to create the spider web design over the top portion.

Add spider and spider eyes to the front and skip the top cap and cape portion.

Super Hero Doll Pattern
Cape
Cut 1 on fold

ShwinDesigns®



Fold Line

Super Hero Doll Pattern
Hero Cap Back
Cut 1 on fold

ShwinDesigns®



Fold Line

Super Hero Doll
Spider Eye
Cut 2

Super Hero Doll Pattern
Hero Cap Front
Cut 1 on fold

ShwinDesigns®



Fold Line

Test
Square
1"X1"

Super Hero Doll Pattern
"Thor" Vest front and back
Cut 2 on fold

ShwinDesigns®



Fold Line

Fold Line

Super Hero Doll Pattern
Body Front and Back
Cut 2 on Fold

ShwinDesigns®



Fold Line

A

B

A

Super Hero Doll
Star
Cut 1

Super Hero Doll Pattern
Pants Front and Back
Cut 2 on fold

ShwinDesigns®



Fold Line

Super Hero Doll
"Thor" Vest detail
Cut 4

B

Super Hero Doll Pattern
"Thor" Cap Front and Back
Cut 2 on fold

Fold Line

Hat "ears"
Cut 2

Fold Line

Super Hero Doll
Spider
Cut 1 on fold

Super Hero Doll Pattern
Shirt Front and Back
Cut 2 on fold

ShwinDesigns®



Fold Line