



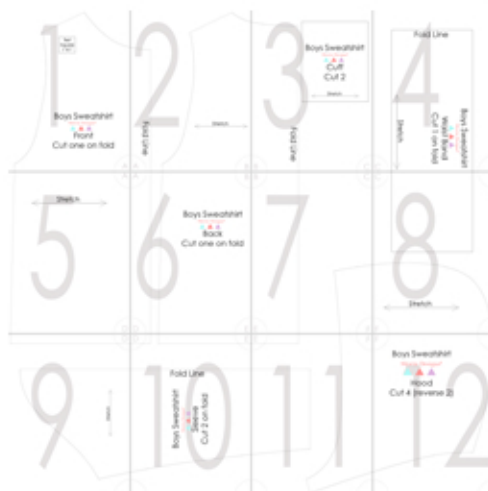
# Boys Sweatshirt Pattern

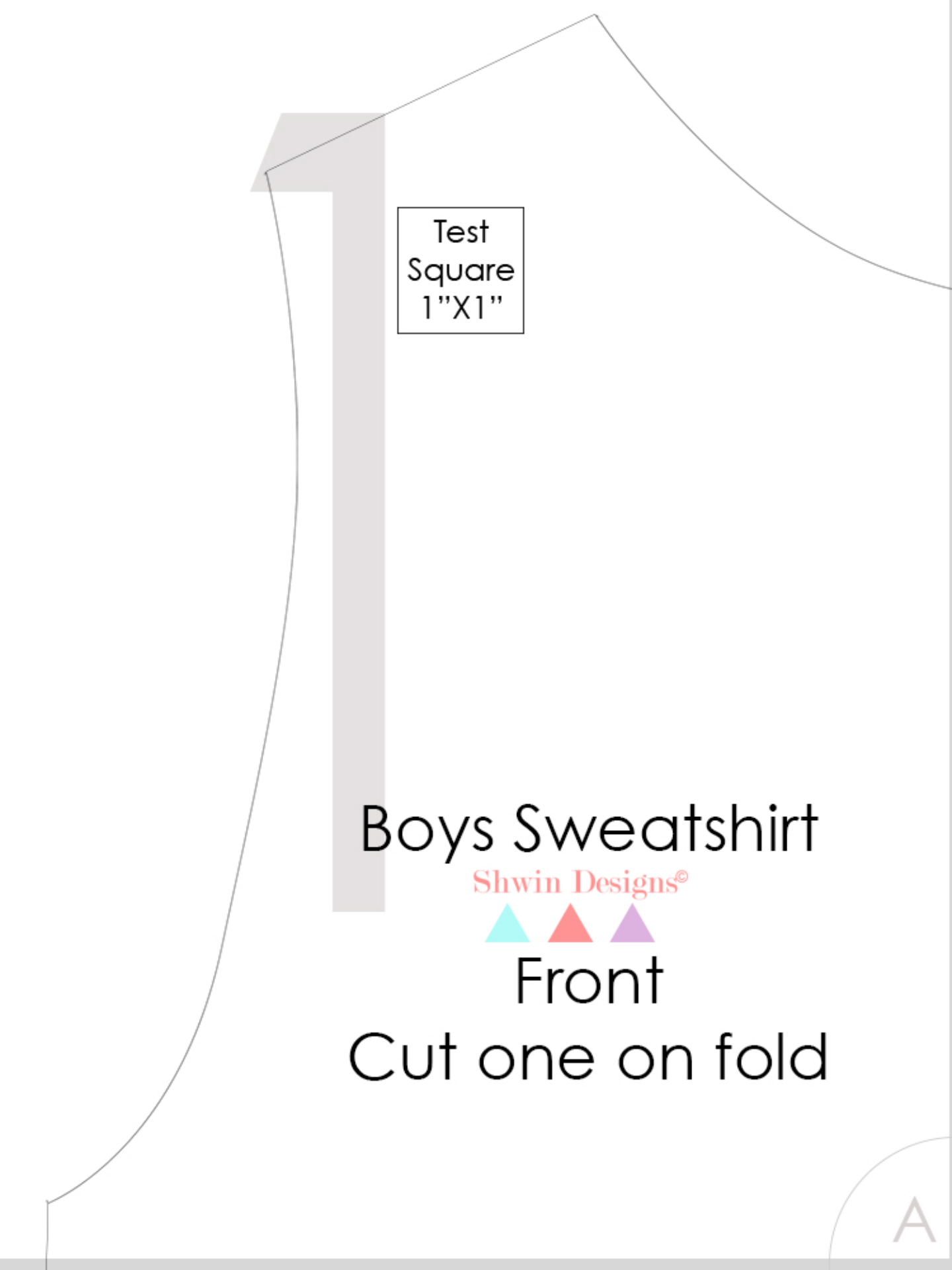
## By Shwin Designs

### Size 8

Print pattern at 100%

Cut along the gray border and tape pieces together to match the guide below





The diagram shows a large, light gray pattern piece for the front of a boys' sweatshirt. It has a curved neckline on the left side and a straight edge on the right. A vertical gray band is attached to the right side of the piece. A small square box is positioned on this band. At the bottom of the piece, there are three small triangles in cyan, red, and purple, followed by the word 'Front' and the instruction 'Cut one on fold'. The entire pattern is set against a white background.

Test  
Square  
1"X1"

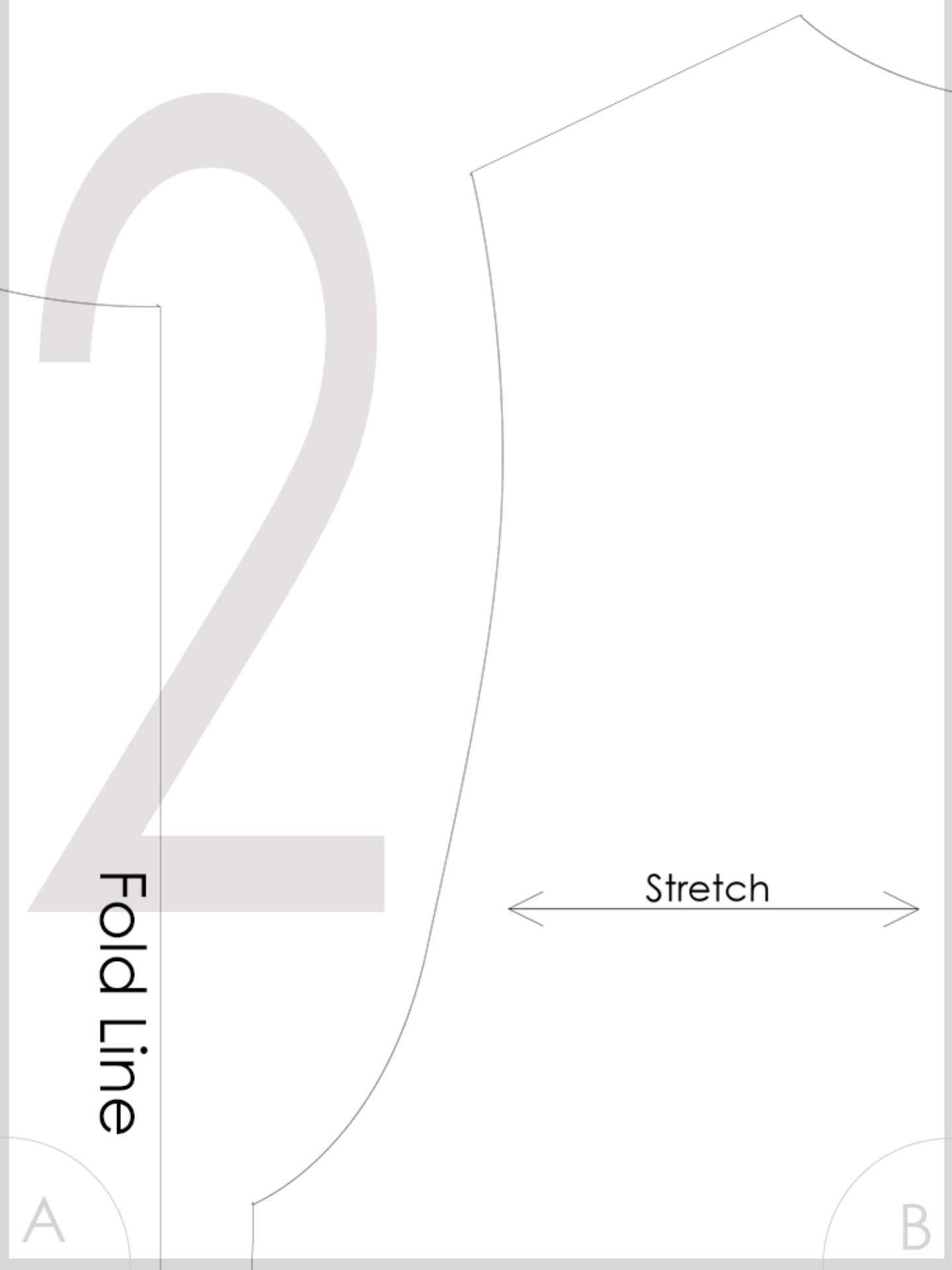
Boys Sweatshirt

Shwin Designs®



Front

Cut one on fold



Fold Line

Stretch

A

B

# Boys Sweatshirt

Shwin Designs®



Cuff  
Cut 2



Fold Line

B

C

# Boys Sweatshirt

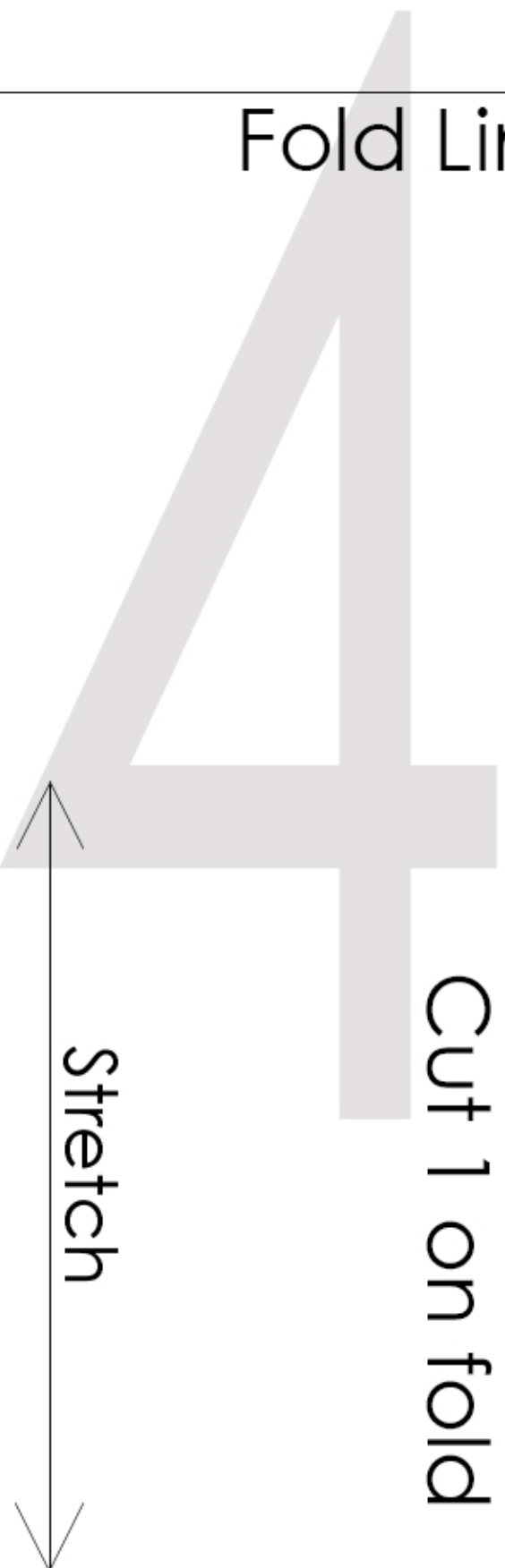
Shwin Designs®

Waist Band

Cut 1 on fold

Fold Line

Stretch



A



D

A

B

# Boys Sweatshirt

Shwin Designs®



## Back

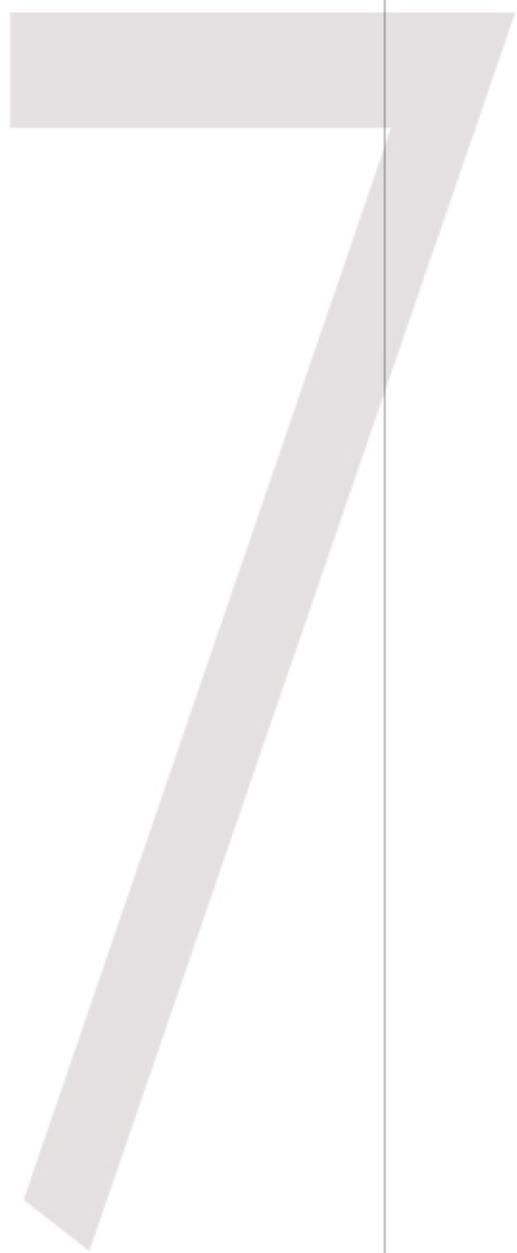
## Cut one on fold

D

E

B

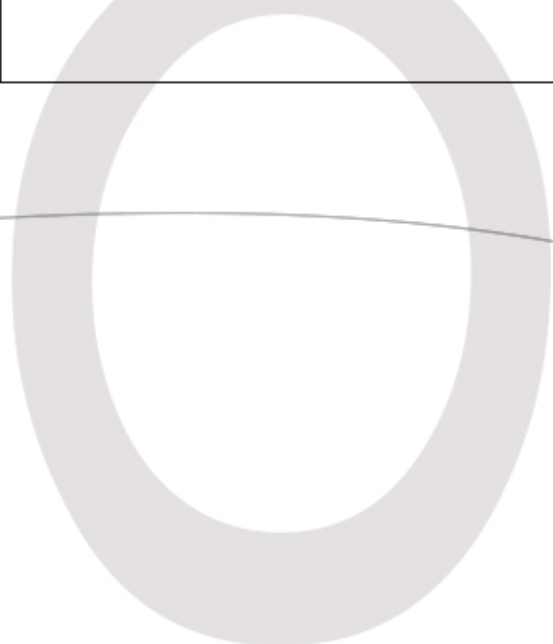
C



E

F

C



Stretch



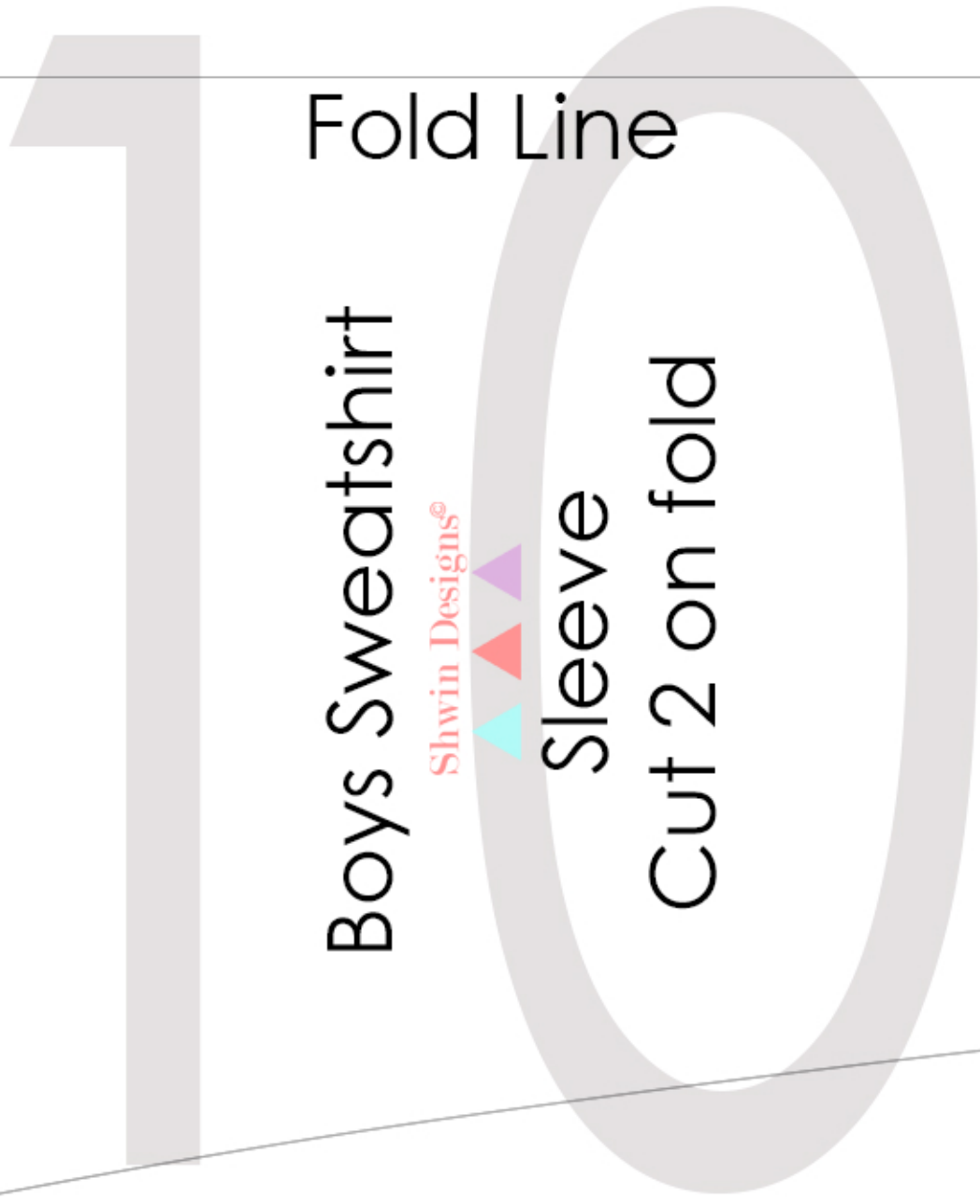
F



Stretch

D

E



Fold Line

Boys Sweatshirt

Shwin Designs®



Sleeve

Cut 2 on fold

E

F



# Boys Sweatshirt

Shwin Designs®



Hood

Cut 4 (reverse 2)

