



Tiny Dancer Quilt

By Shwin&Shwin

Finished Quilt Size: 36"X36"

(for a larger quilt a border can be added)

Fabric needed:

1/4 Yard for Hair

1/4 Yard for Skin

1/4 Yard for Leotard

1 1/4 Yard for white background

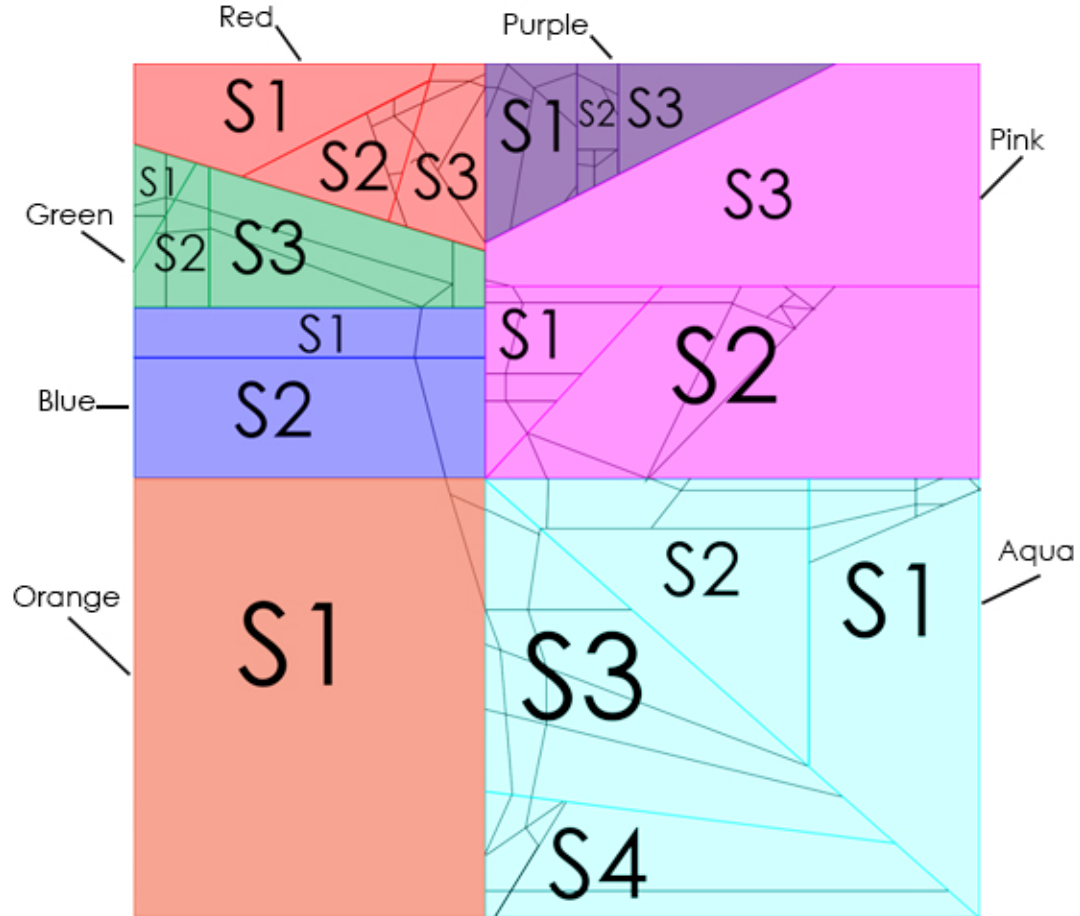
1 Yard for backing

1 Yard batting

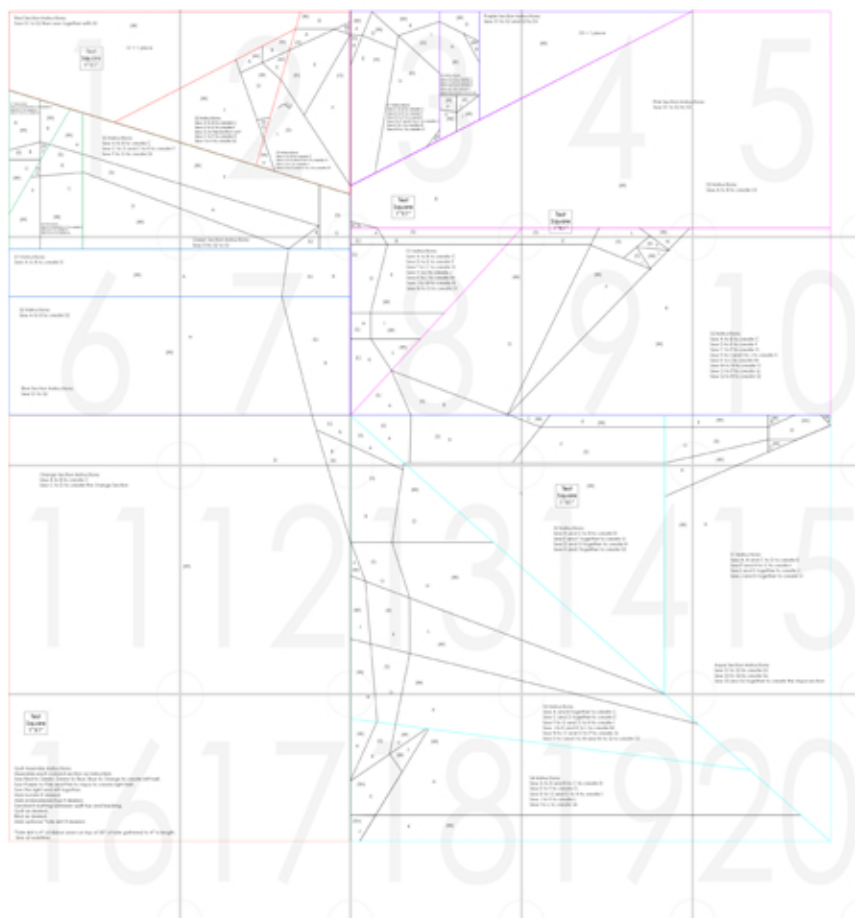
4 Yards binding

36"X6" tulle

14" of ribbon



Quilt Map Guide



Red Section Instructions:

Sew S1 to S2 then sew together with S3

(W)

Test
Square
1"X1"

S1 = 1 piece

S1 Instructions:

Sew A to B and B to C to create D
Sew E to F to create G
Sew G to D to create S1

(W)

E

(S)

F

(S)

E

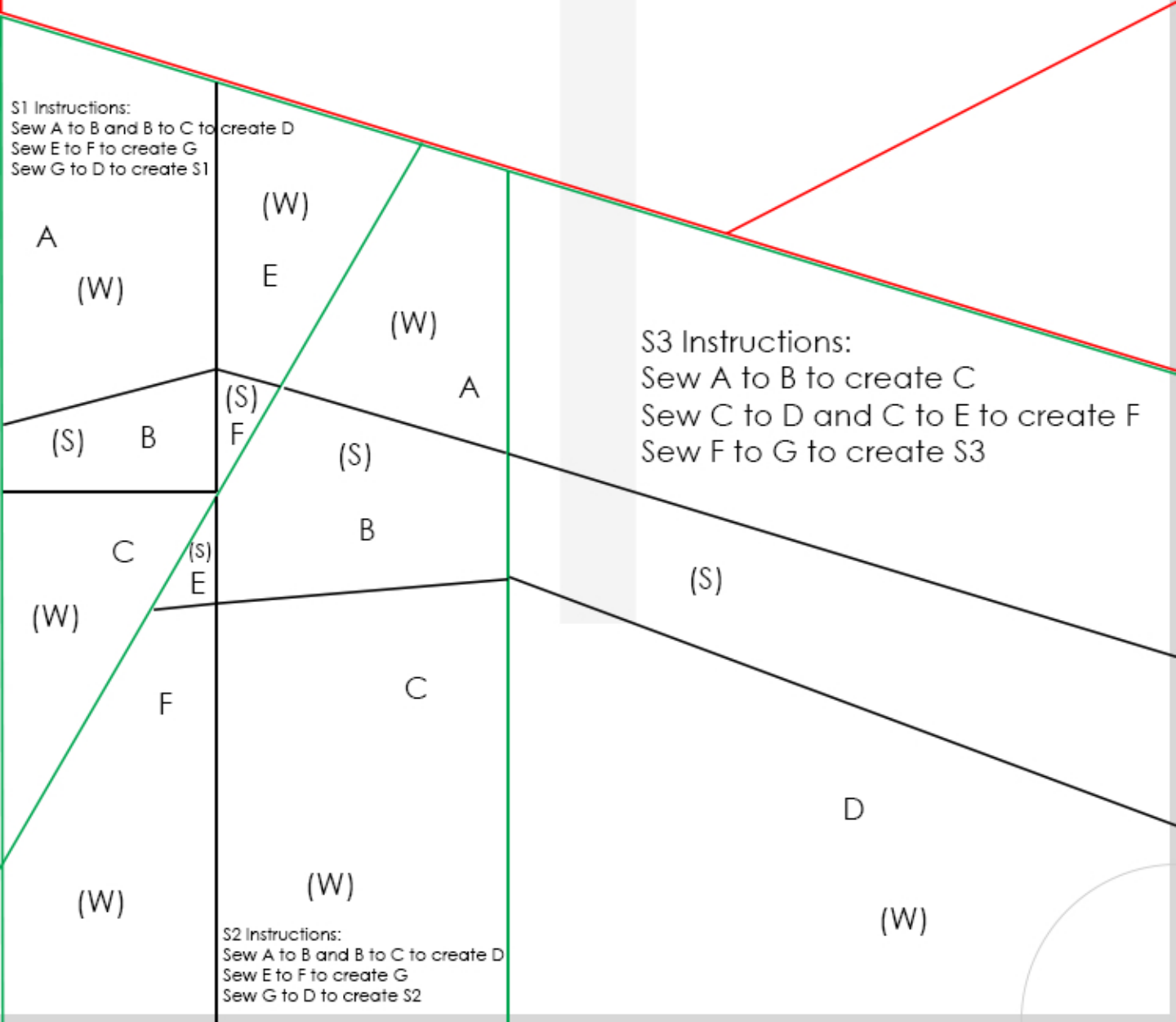
F

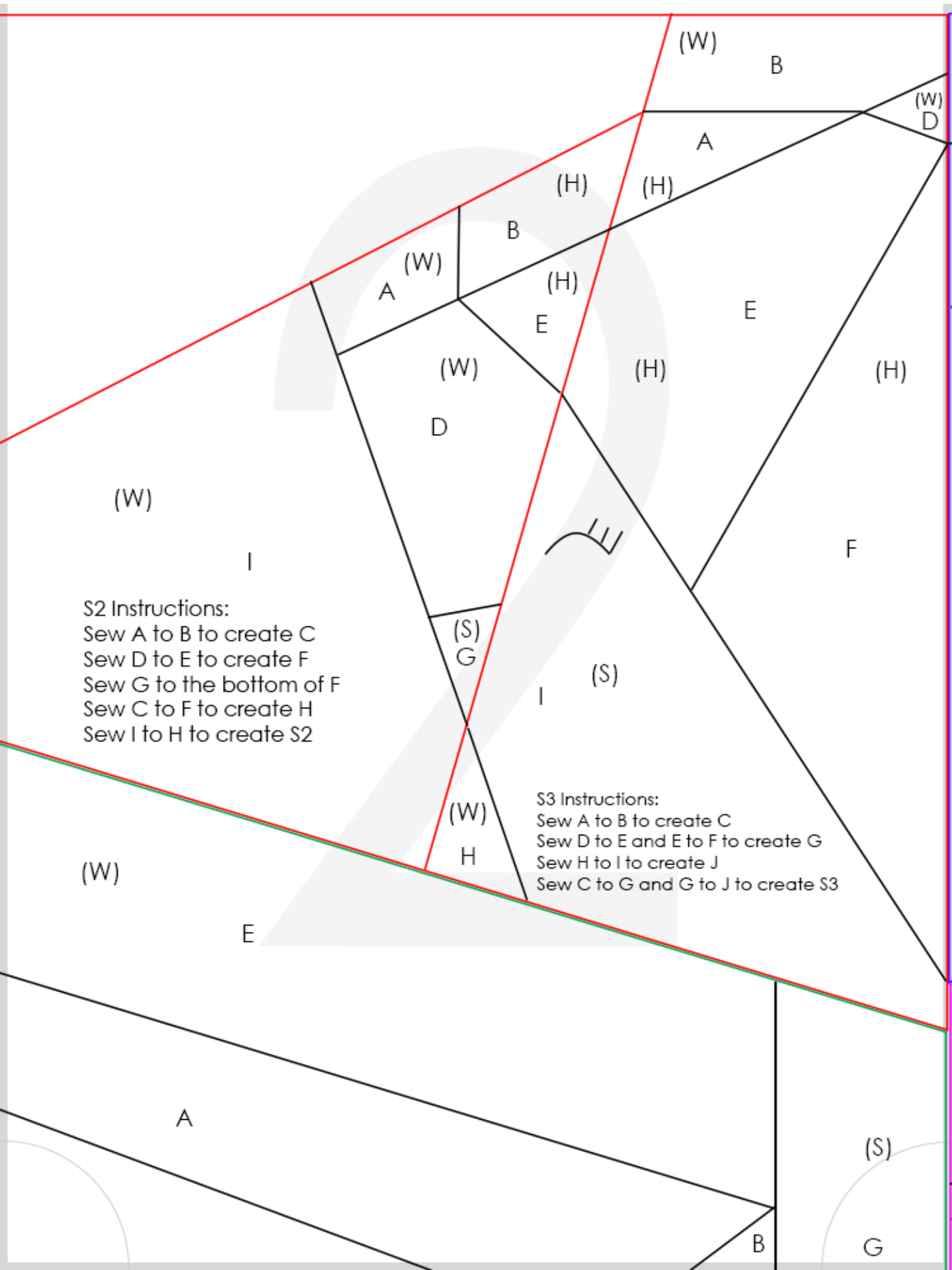
S2 Instructions:

Sew A to B and B to C to create D
Sew E to F to create G
Sew G to D to create S2

S3 Instructions:

Sew A to B to create C
Sew C to D and C to E to create F
Sew F to G to create S3



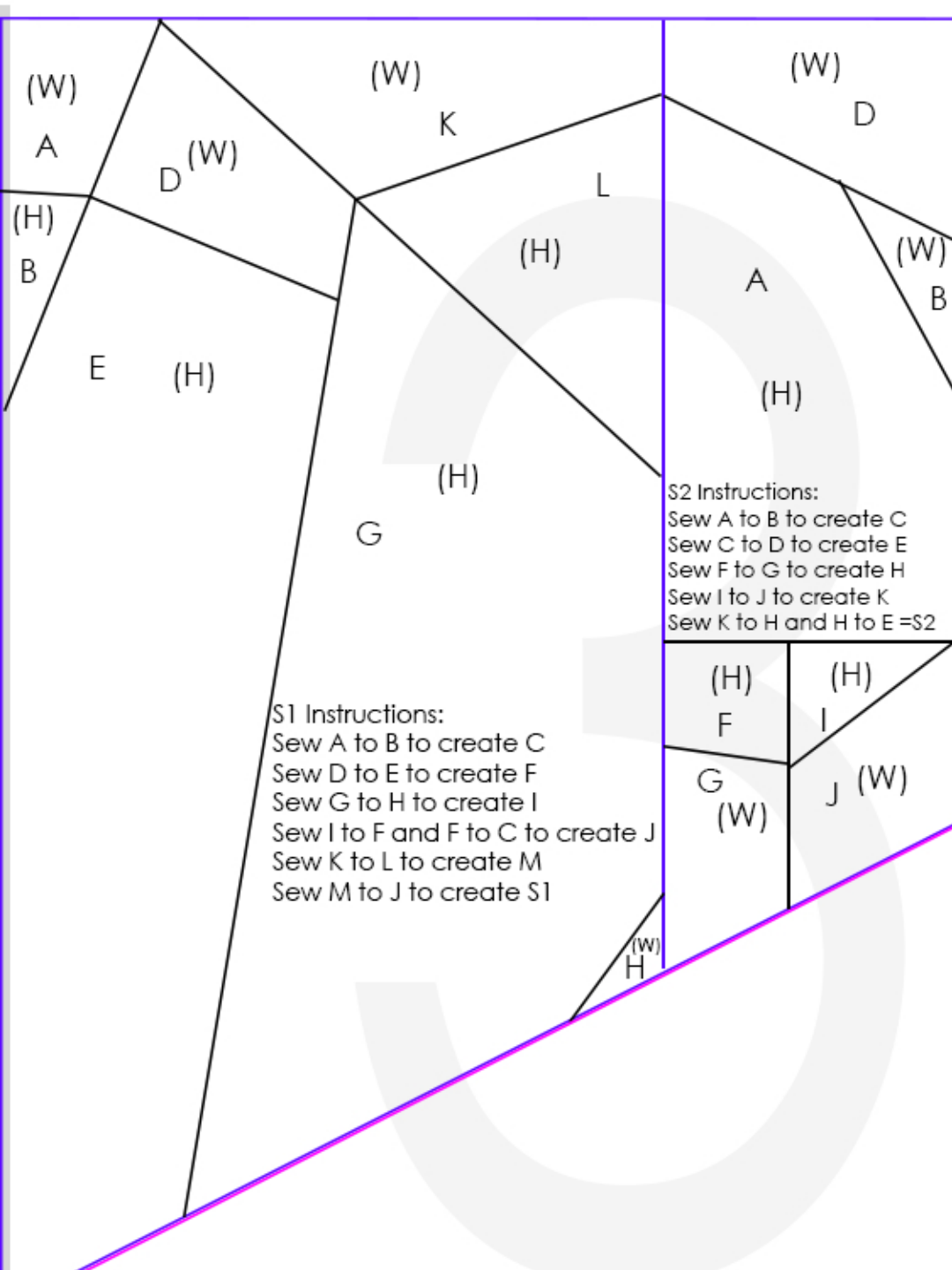


S2 Instructions:

Sew A to B to create C
Sew D to E to create F
Sew G to the bottom of F
Sew C to F to create H
Sew I to H to create S2

S3 Instructions:

Sew A to B to create C
Sew D to E and E to F to create G
Sew H to I to create J
Sew C to G and G to J to create S3



S1 Instructions:
Sew A to B to create C
Sew D to E to create F
Sew G to H to create I
Sew I to F and F to C to create J
Sew K to L to create M
Sew M to J to create S1

S2 Instructions:
Sew A to B to create C
Sew C to D to create E
Sew F to G to create H
Sew I to J to create K
Sew K to H and H to E =S2

Test
Square
1"X1"

B

(L) A

A

(S)

Purple Section Instructions:
Sew S1 to S2 and S2 to S3

S3 = 1 piece

(W)

Pink Section Instructions:
Sew S1 to S2 to S3

(W)

Test
Square
1"X1"

(S)

L

(W)



S3 Instructions:
Sew A to B to create S3

S1 Instructions:
Sew A to B to create S1

(W)

S2 Instructions:
Sew A to B to create S2

(W)

Blue Section Instructions:
Sew S1 to S2

Green Section Instructions:
Sew S1 to S2 to S3

(L)

A

(L)

B

A

(L)

B

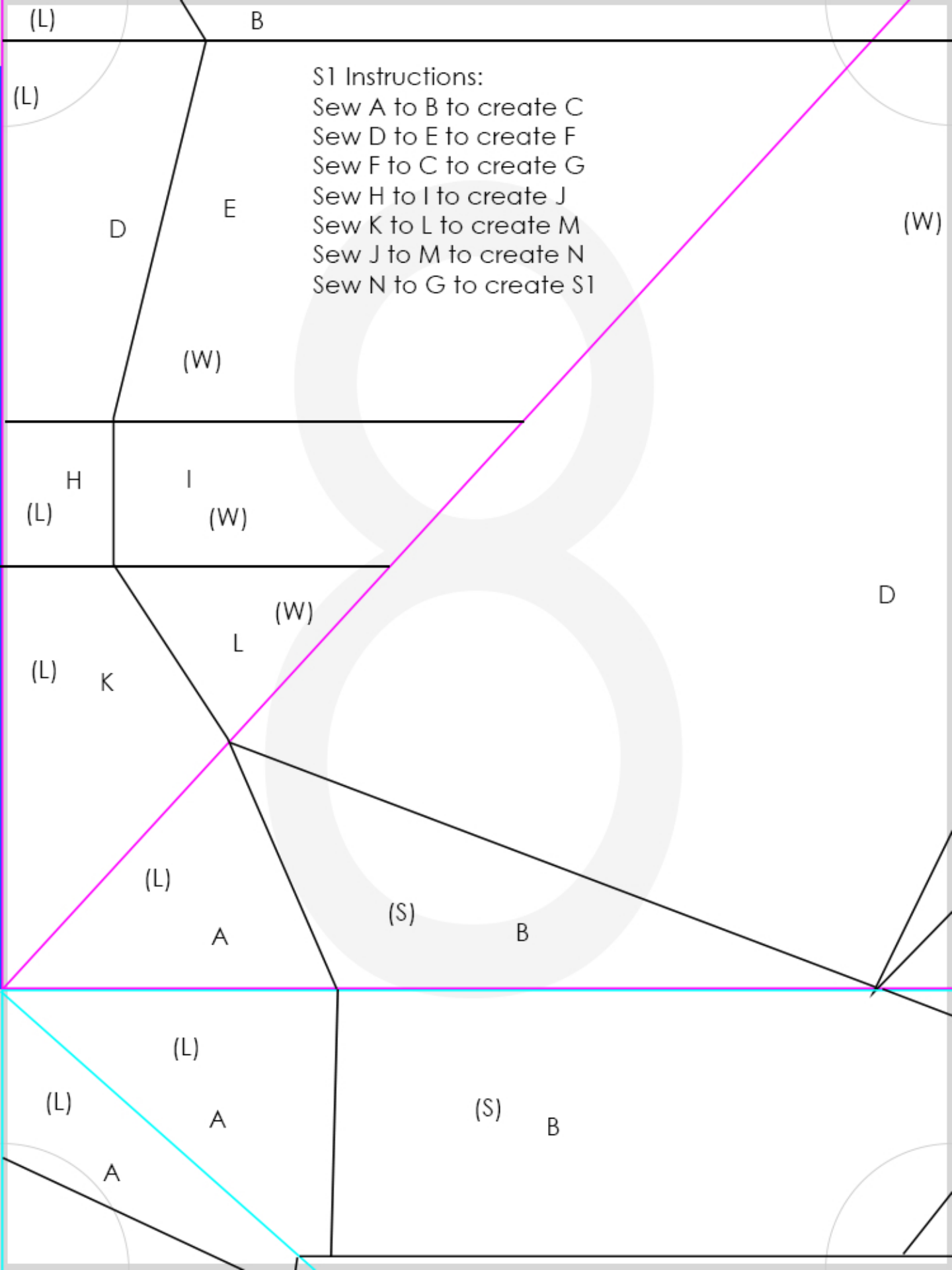
(L)

A

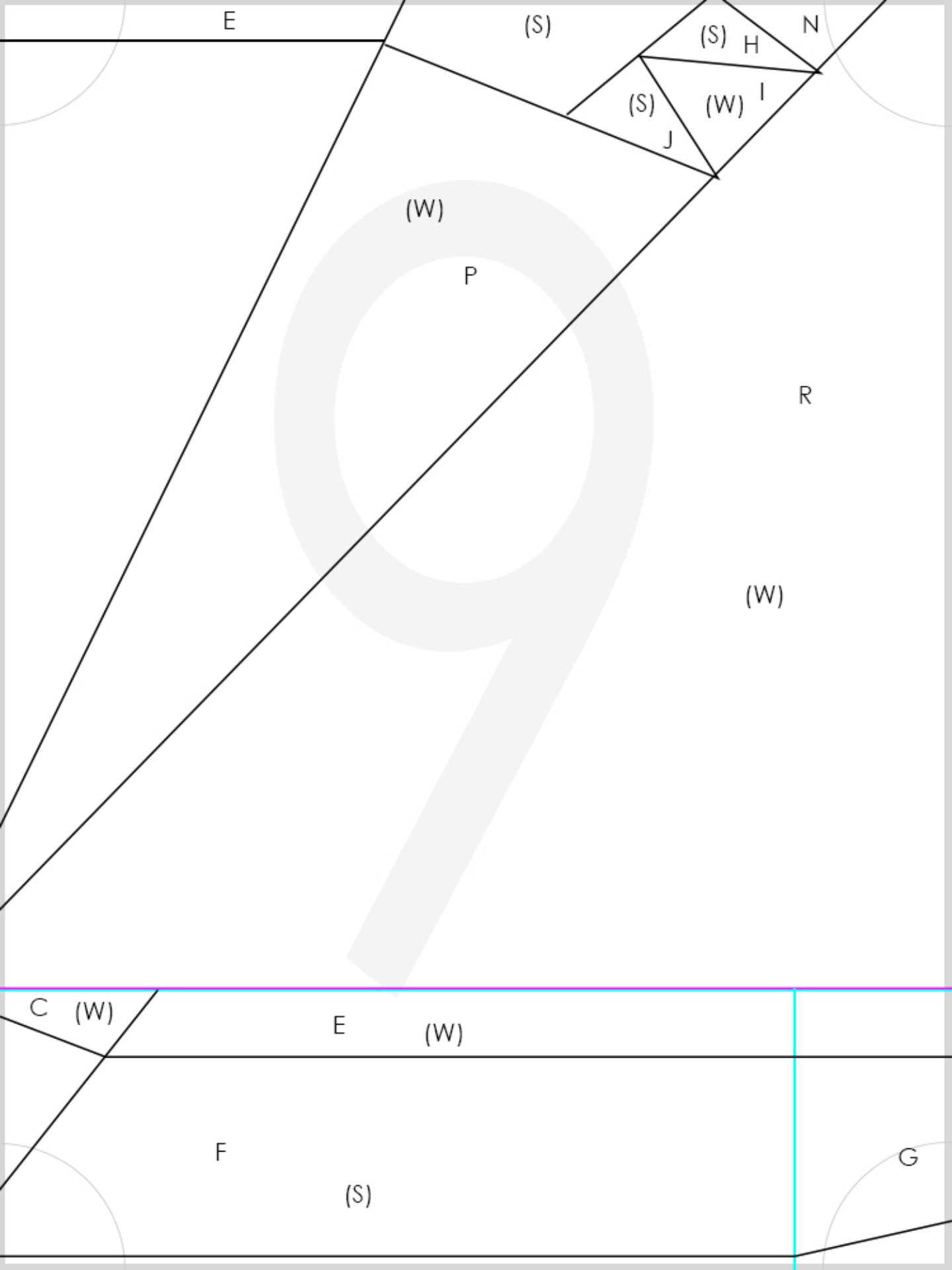
B

(S)

D



S1 Instructions:
Sew A to B to create C
Sew D to E to create F
Sew F to C to create G
Sew H to I to create J
Sew K to L to create M
Sew J to M to create N
Sew N to G to create S1



S2 Instructions:

Sew A to B to create C

Sew D to E to create F

Sew C to F to create G

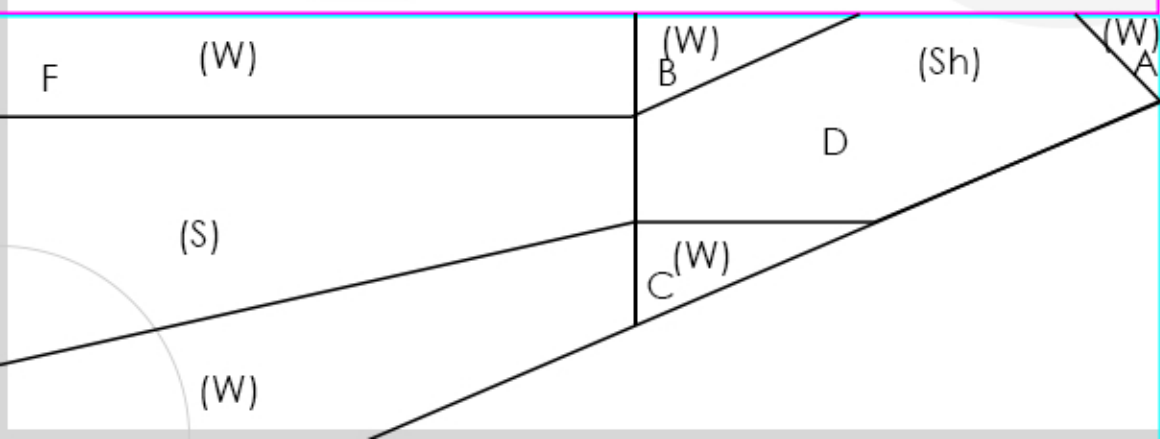
Sew H to I and I to J to create K

Sew K to L to create M

Sew M to N to create O

Sew O to P to create Q

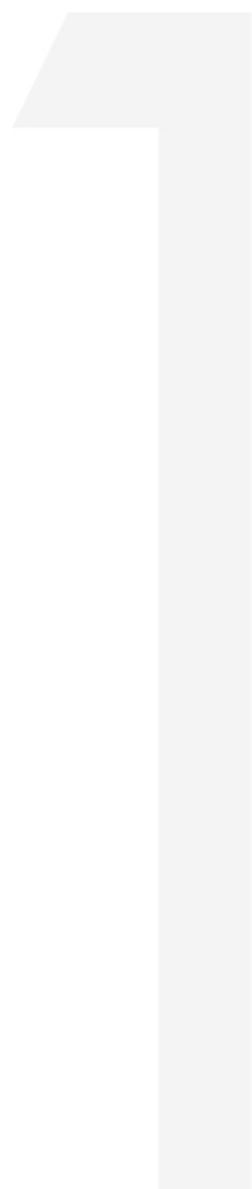
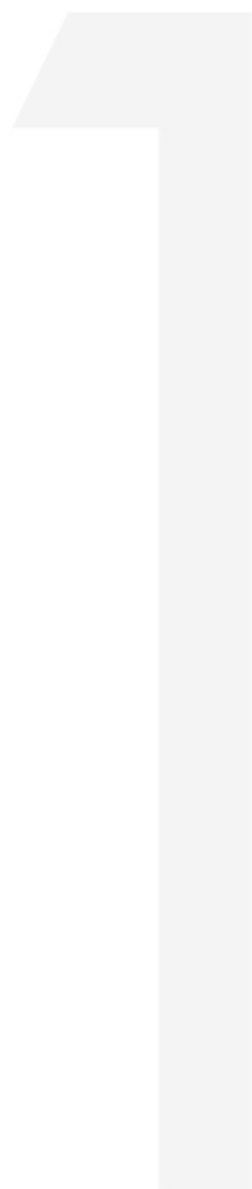
Sew Q to R to create S2



Orange Section Instructions:

Sew A to B to create C

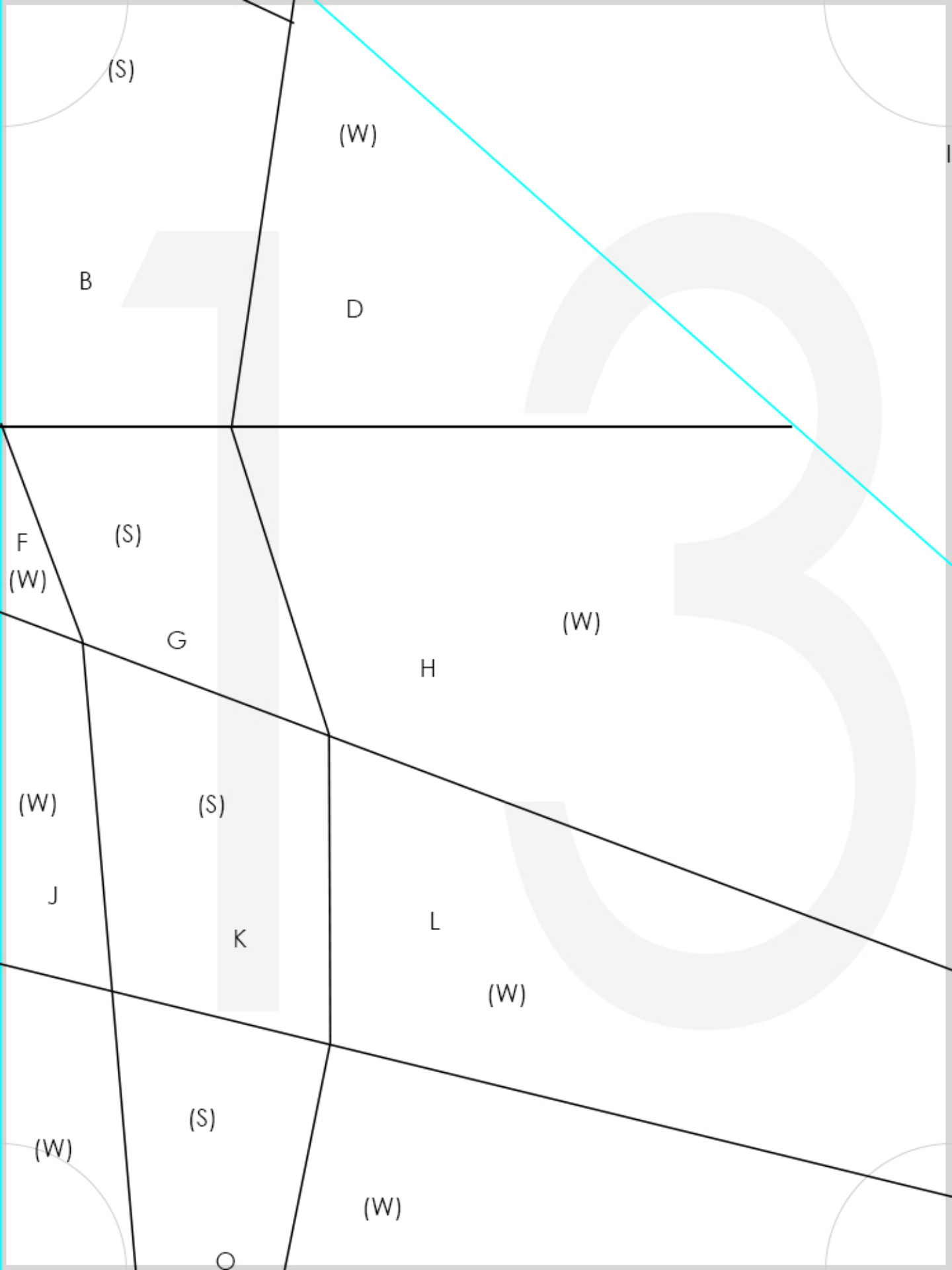
Sew C to D to create the Orange Section



1

2

(W)



H

Test
Square
1"X1"

(W)

(W)

S2 Instructions:

Sew A and C to B to create D

Sew E and F together to create G

Sew D and G together to create H

Sew H and I together to create S2

K

S1 Instructions:

Sew A, B and C to D to create E

Sew F and H to G to create I

Sew I and E together to create J

Sew J and K together to create S1

Aqua Section Instructions:

Sew S1 to S2 to create S5

Sew S3 to S4 to create S6

Sew S5 and S6 together to create the Aqua section

Test
Square
1"X1"

Quilt Assembly Instructions:

Assemble each colored section as instructed.

Sew Red to Green, Green to Blue, Blue to Orange to create left half.

Sew Purple to Pink and Pink to Aqua to create right half.

Sew the right and left together.

Add border if desired.

Add embroidered Eye if desired.

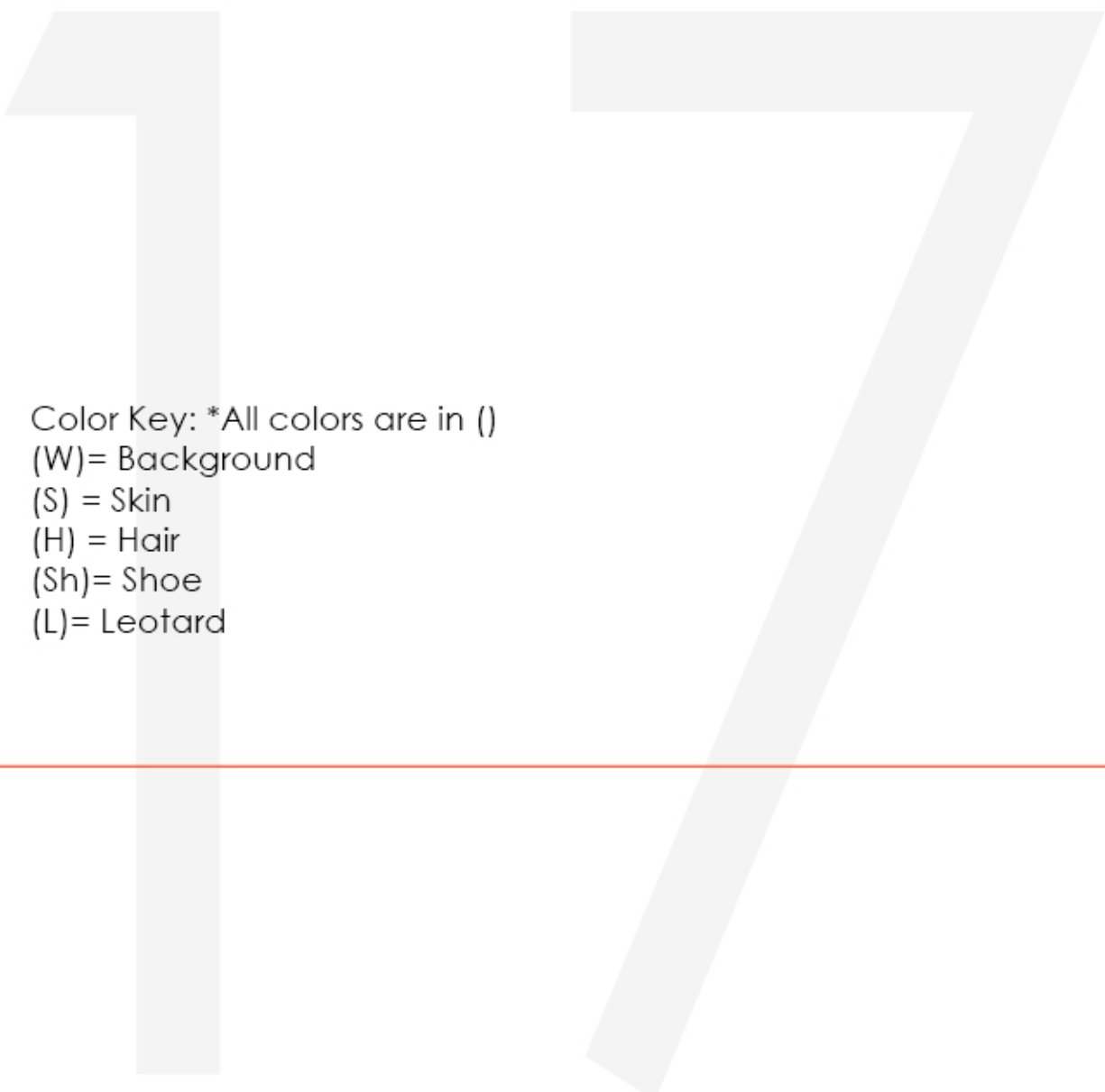
Sandwich batting between quilt top and backing.

Quilt as desired.

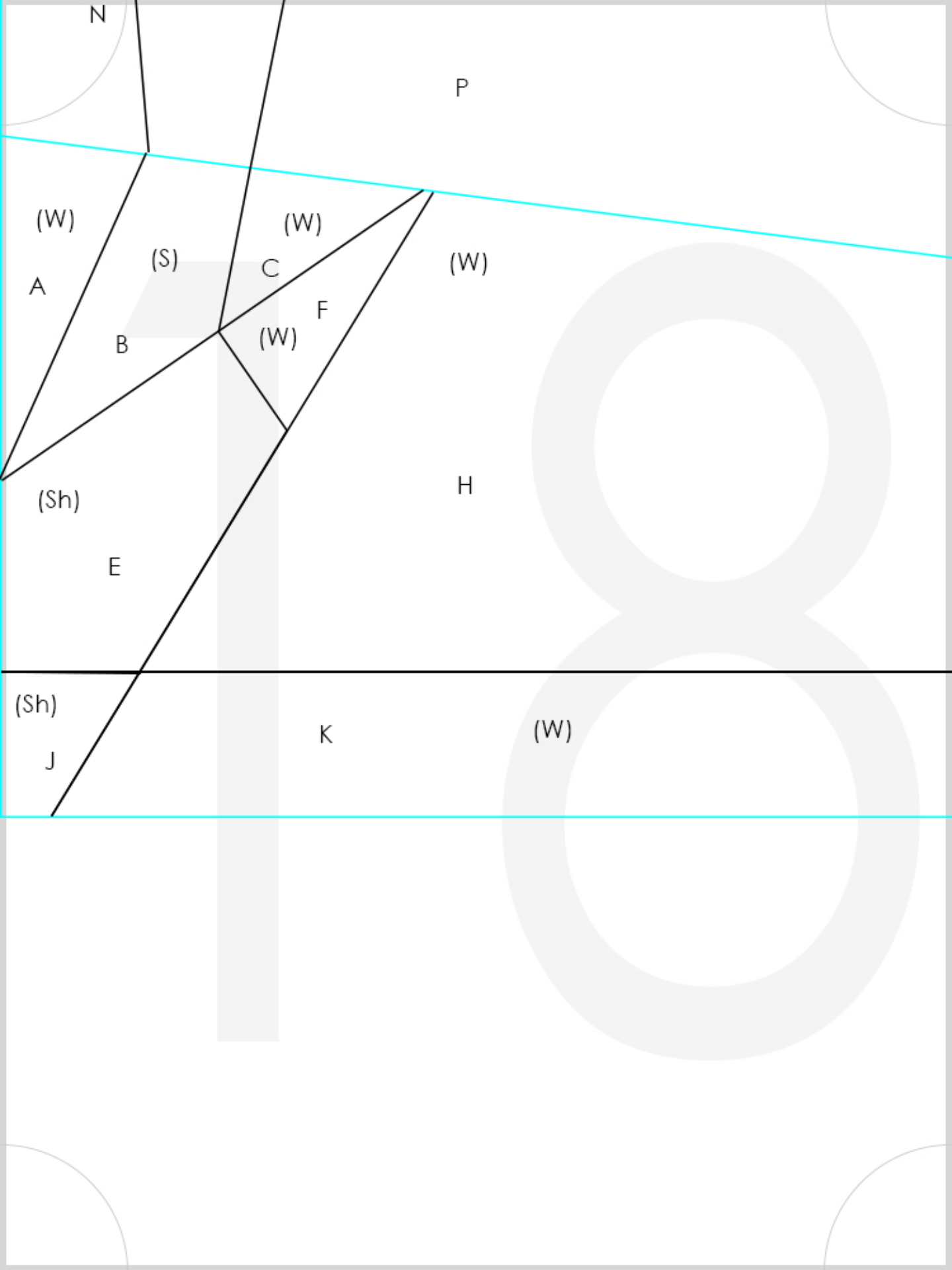
Bind as desired.

Add optional *tulle skirt if desired.

*Tulle skirt is 4" of ribbon sewn on top of 30" of tulle gathered to 4" in length.
Sew at waistline.



Color Key: *All colors are in ()
(W)= Background
(S) = Skin
(H) = Hair
(Sh)= Shoe
(L)= Leotard



S3 Instructions:

Sew A and B together to create C

Sew C and D together to create E

Sew F to G and G to H to create I

Sew J to K and K to L to create M

Sew N to O and O to P to create Q

Sew E to I and I to M and M to Q to create S3

S4 Instructions:

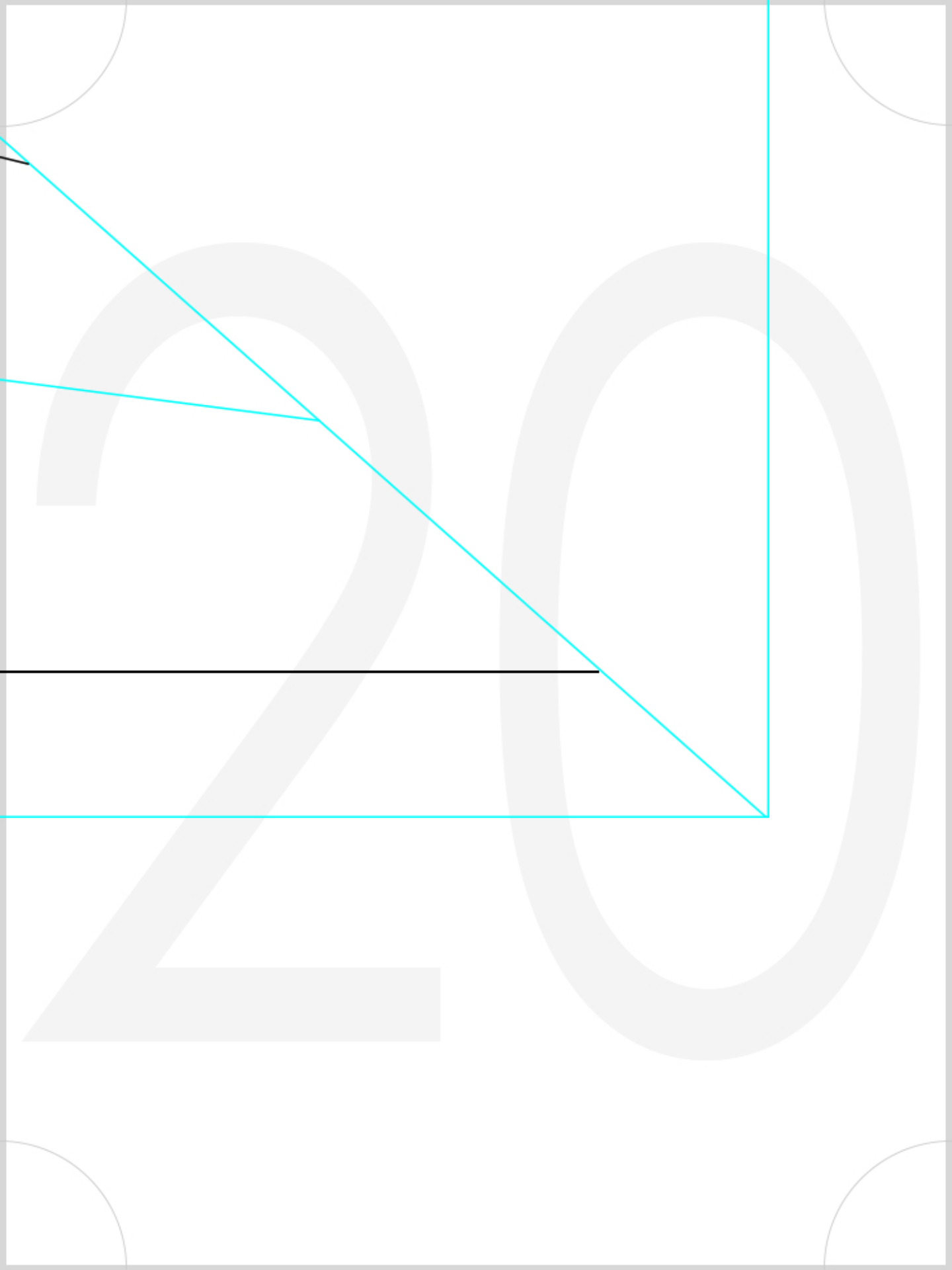
Sew A to B and B to C to create D

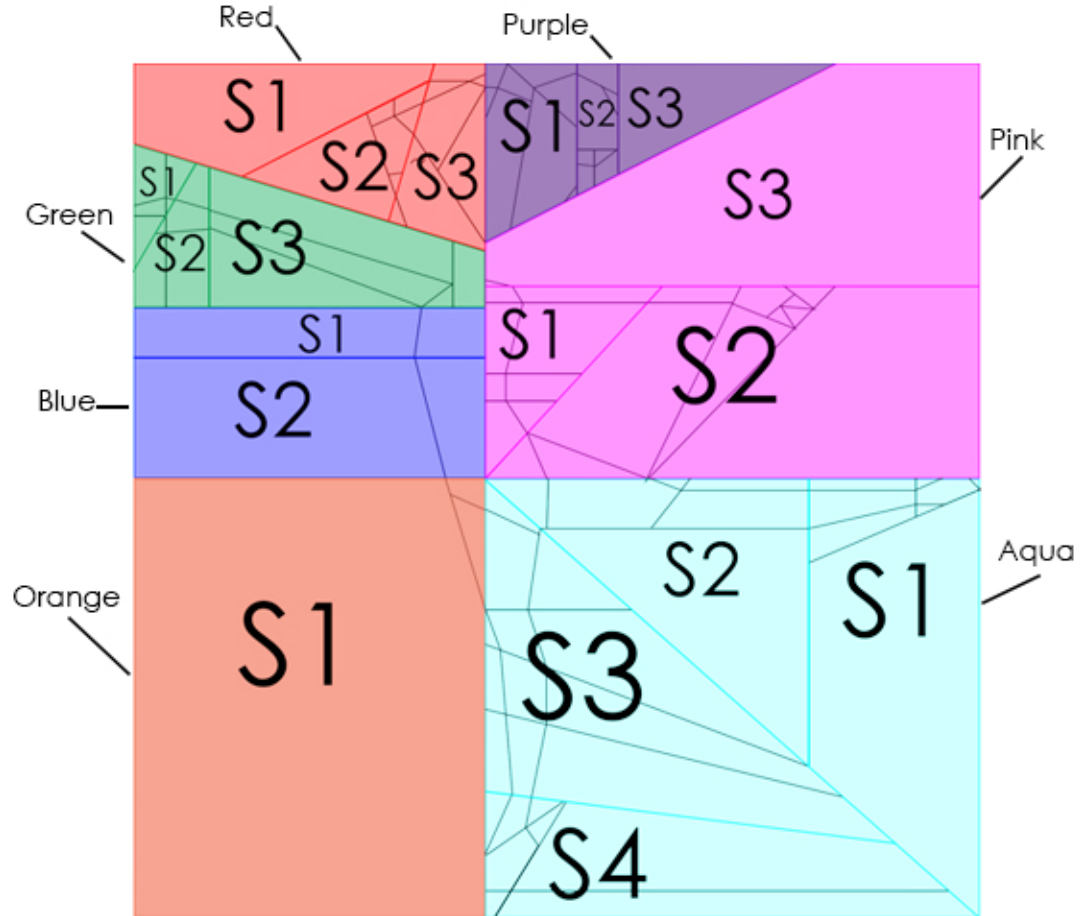
Sew E to F to create G

Sew D to G and G to H to create I

Sew J to K to create L

Sew I to L to create S4





Quilt Map Guide

