



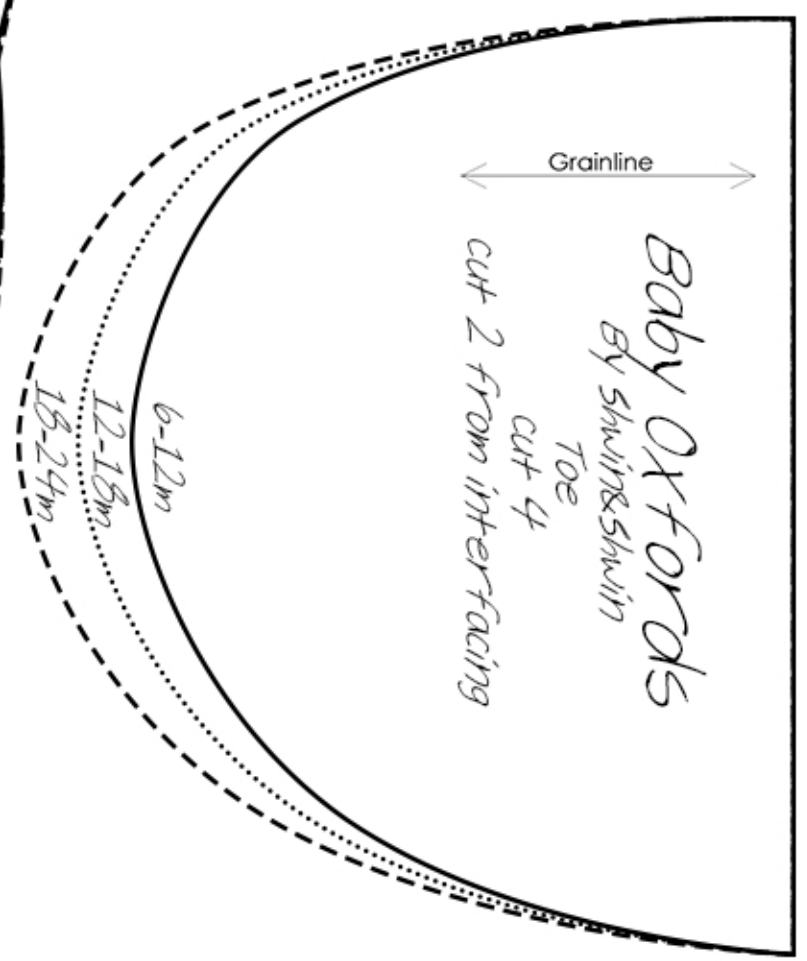
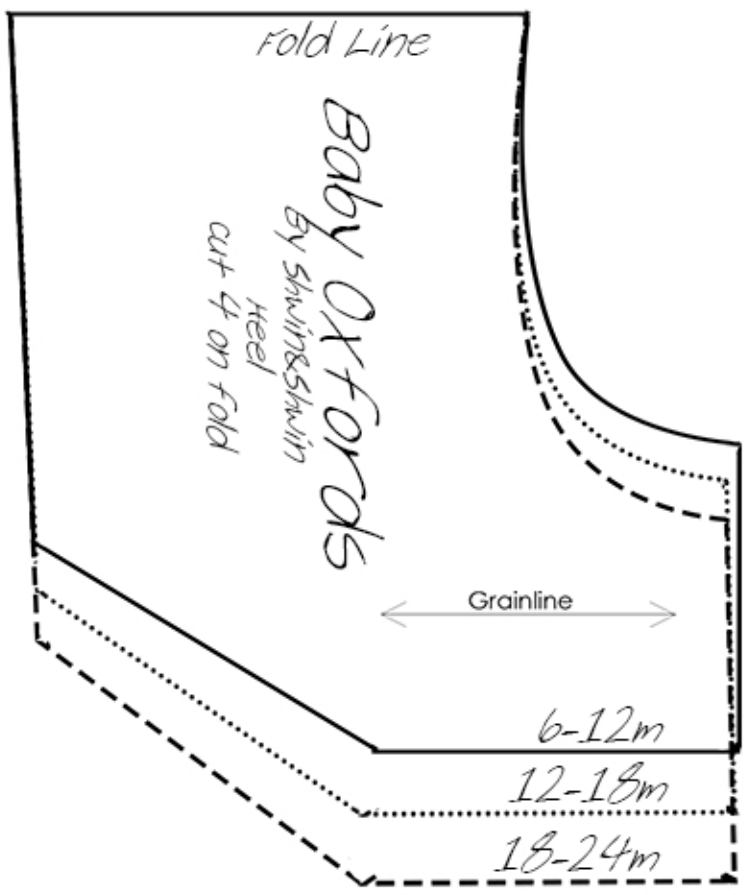
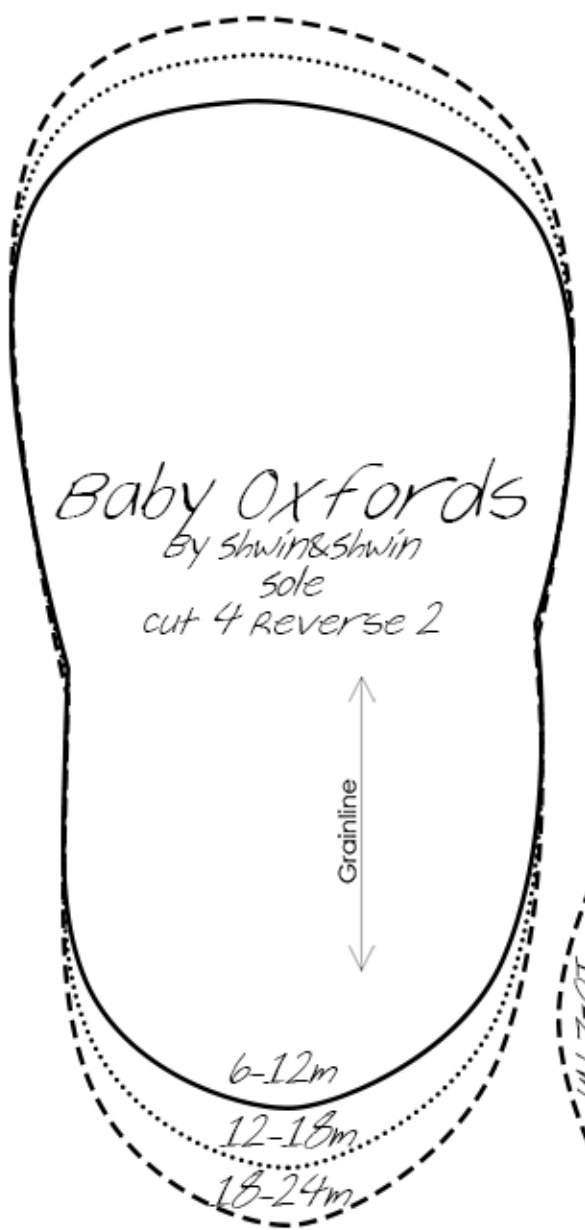
Baby Oxfords

By Shwin & Shwin

Print pattern at 100%
check test square.

Sew with 1/4" seam allowance
Follow instructions found at shwinandshwin.com

- 6-12m
- 12-18m
- - - - - 18-24m



Test
square
1" x 1"

Pattern Pieces and Instructions
are copyright portected
Shwinandshwin.com

