



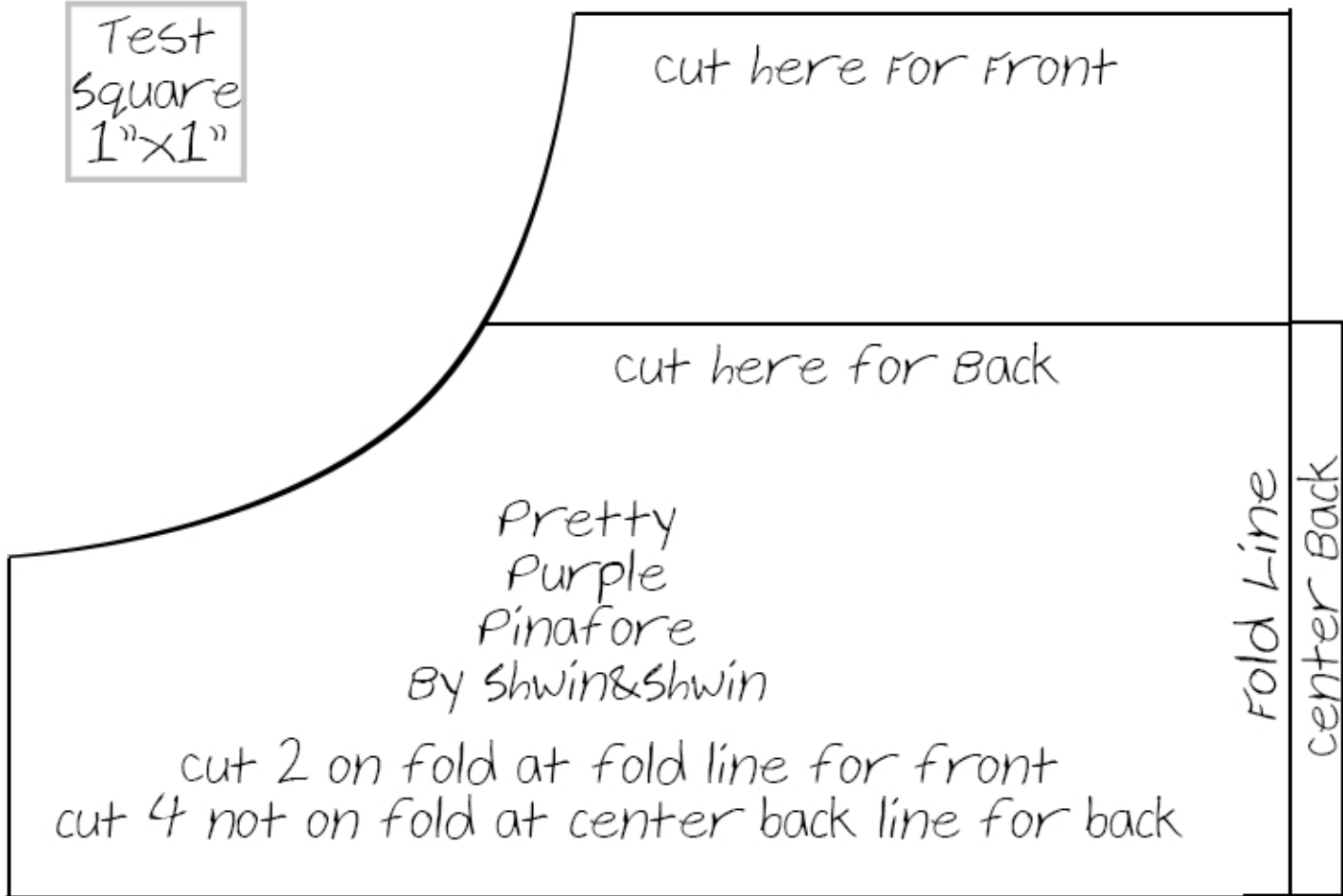
Pretty
Purple
Pinafore
By Shwin&Shwin

Pretty Purple Pinafore
Pattern Pieces By: Shwin&Shwin

For more patterns check out
www.shwindesigns.bigcartel.com

shwinandshwin.com

Test
Square
1"x1"



- Additionally cut:
- 1- 17"x45" rectangle for front skirt
 - 2- 17"x23" rectangles for back skirt
 - 1 2"x13" strip for ruffle
 - 2- 2"x8" strip for straps

Pattern pieces created and drafted by
Shwin&Shwin

Pattern may not be sold, copied or redistributed