



Rainbow Pieced Peplum

Print pattern pieces at 100% Do NOT scale

Cut out pieces as instructed and then cut half circle skirt
as instructed on page one.

You also need to cut out 1 half circle skirt

To do this:

Fold the fabric in half once.

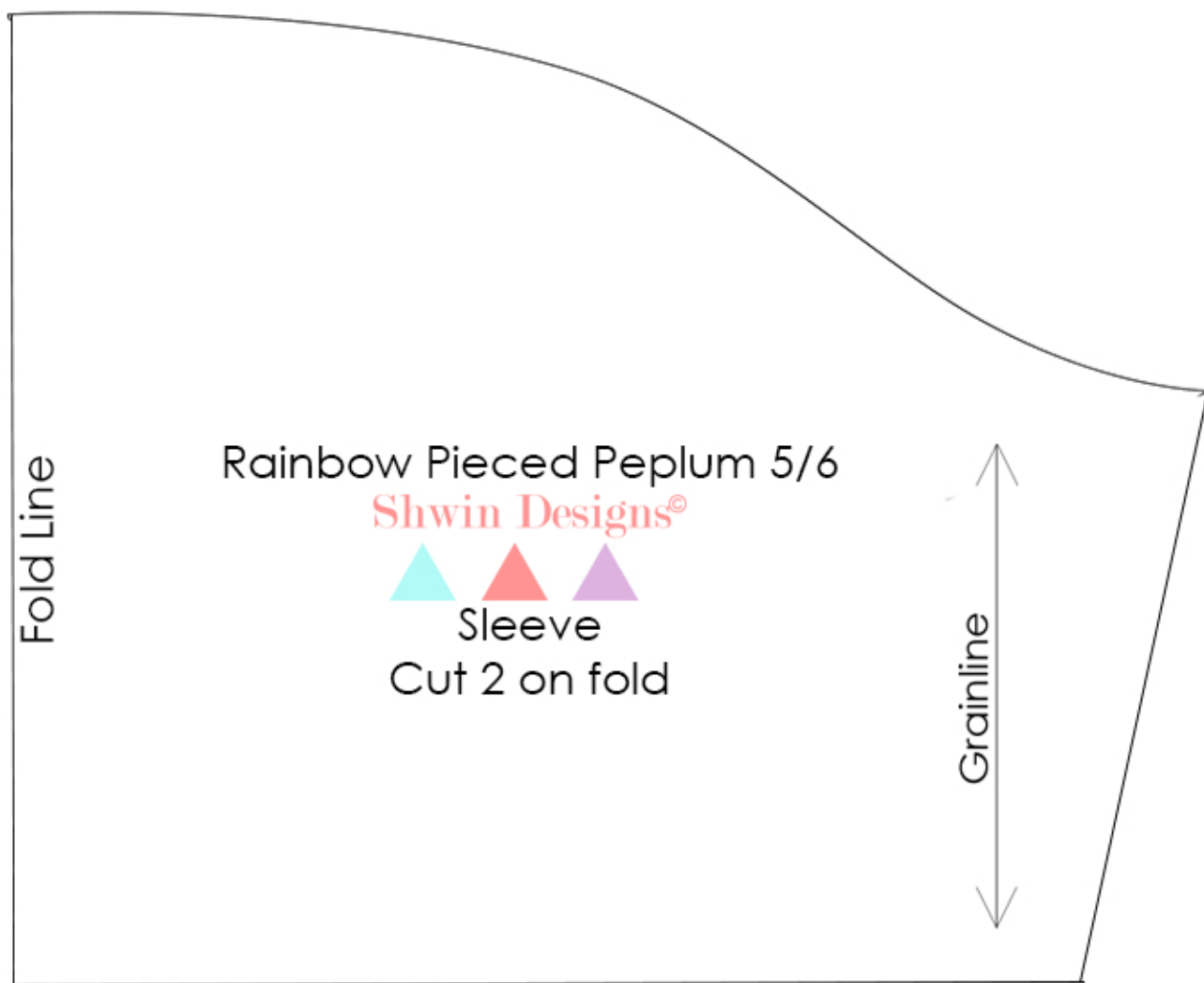
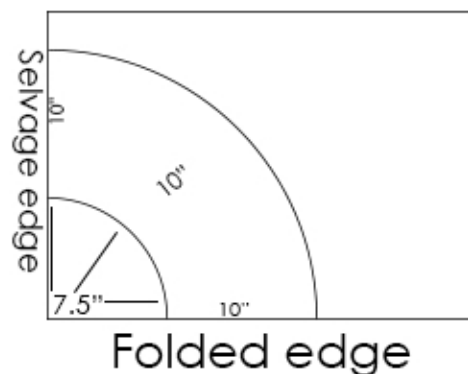
From the top corner cut 7.5" out straight

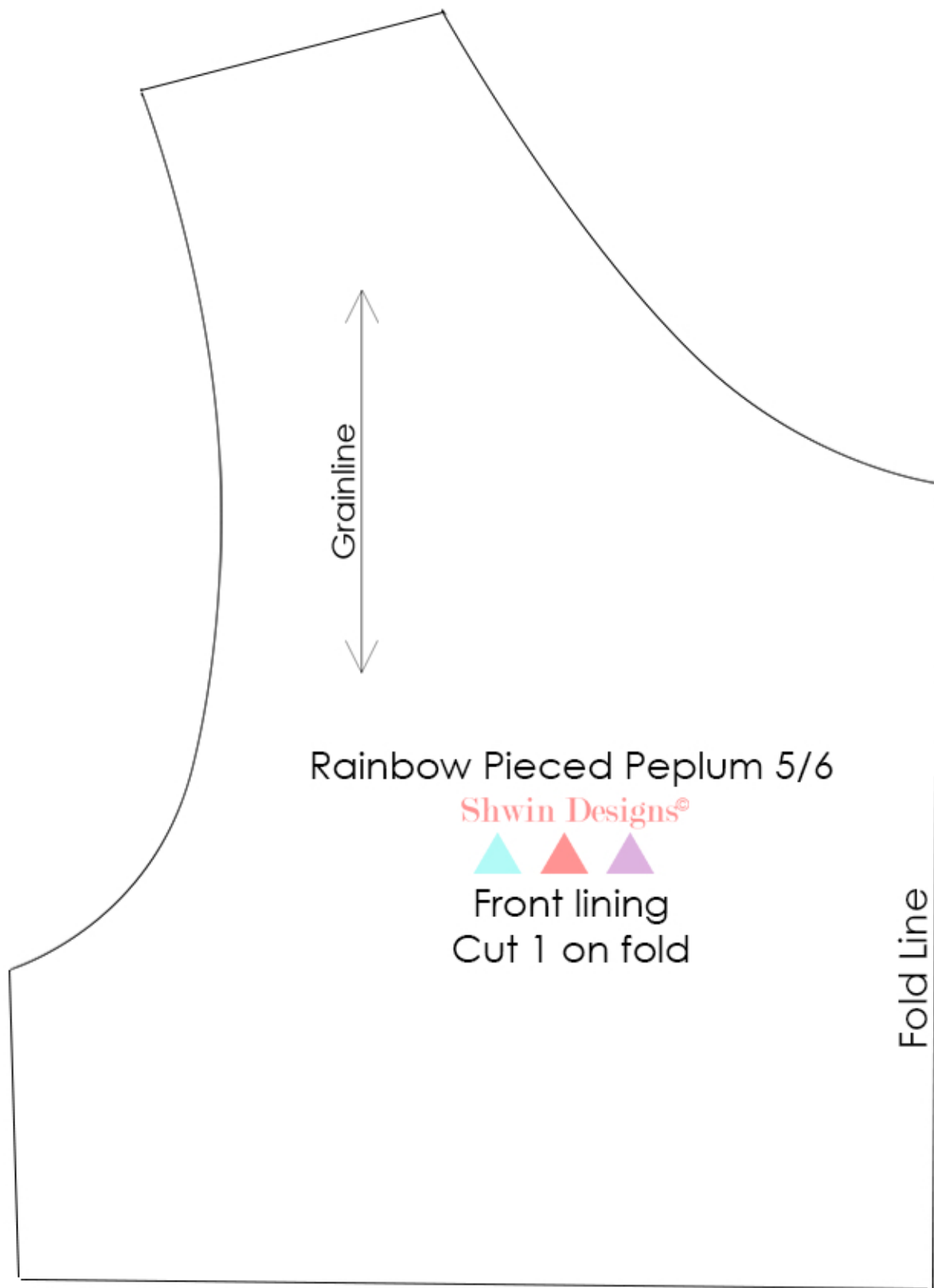
Then repeat cutting the 7.5" from the corner

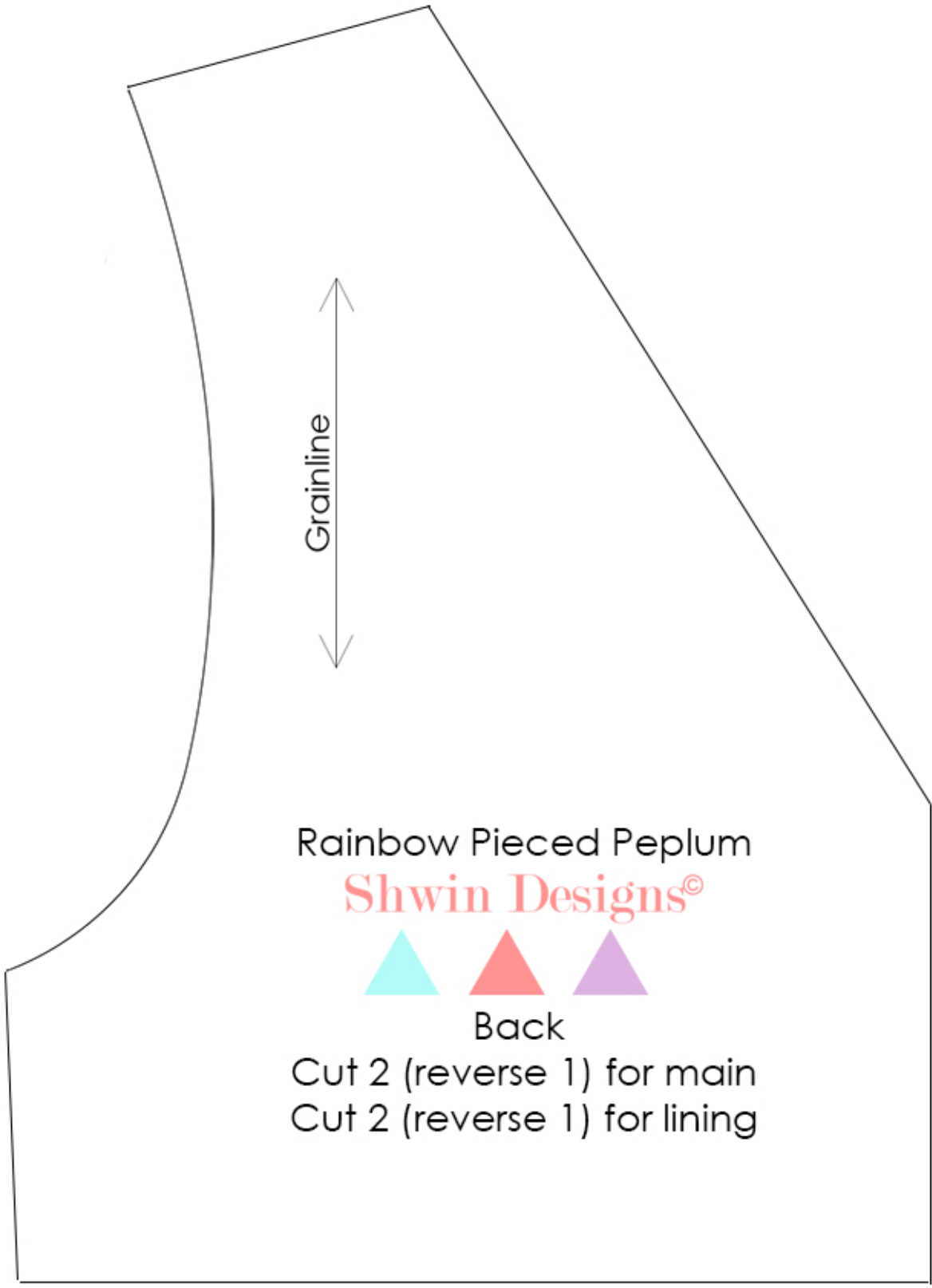
until you have cut out a semi circle shape.

Then from the cut edge measure 10" (or longer)
to cut a circular shape following that measurement all around.
When done you should have a half circle doughnut.

Test
Square
1"X1"







Grainline

Rainbow Pieced Peplum

Shwin Designs®



Back

Cut 2 (reverse 1) for main

Cut 2 (reverse 1) for lining

A

Rainbow Pieced Peplum 5/6

Shwin Designs®



Front Left&Right
Cut 2 (reverese one)



Fold Line

Rainbow Pieced Peplum 5/6

Shwin Designs®



Front Center
Cut 1 on fold