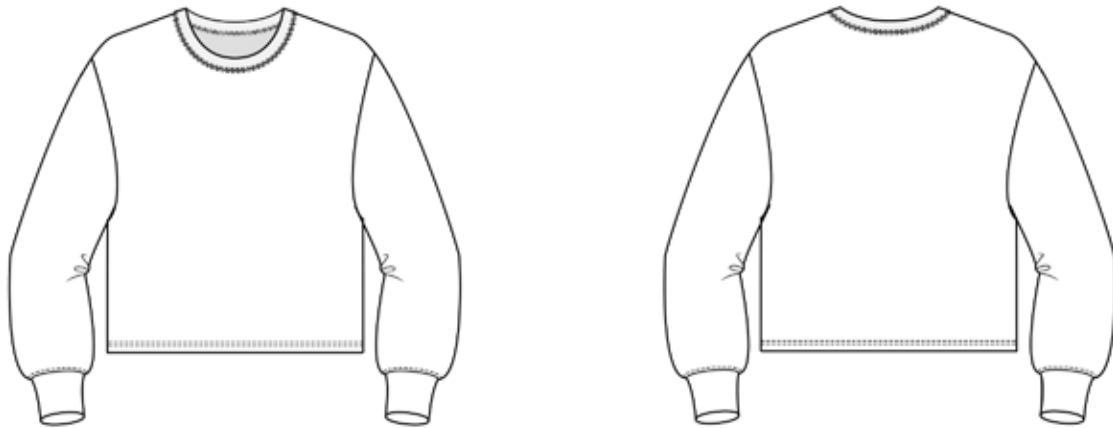


The Oversized Sweatshirt



PDF Pattern

Pattern is size Womens Small
Designed for the following measurements: Bust 34-35 Waist 27-28" Hip 34-35"
The sweatshirt has a dropped sleeve, oversized wide cropped fit.

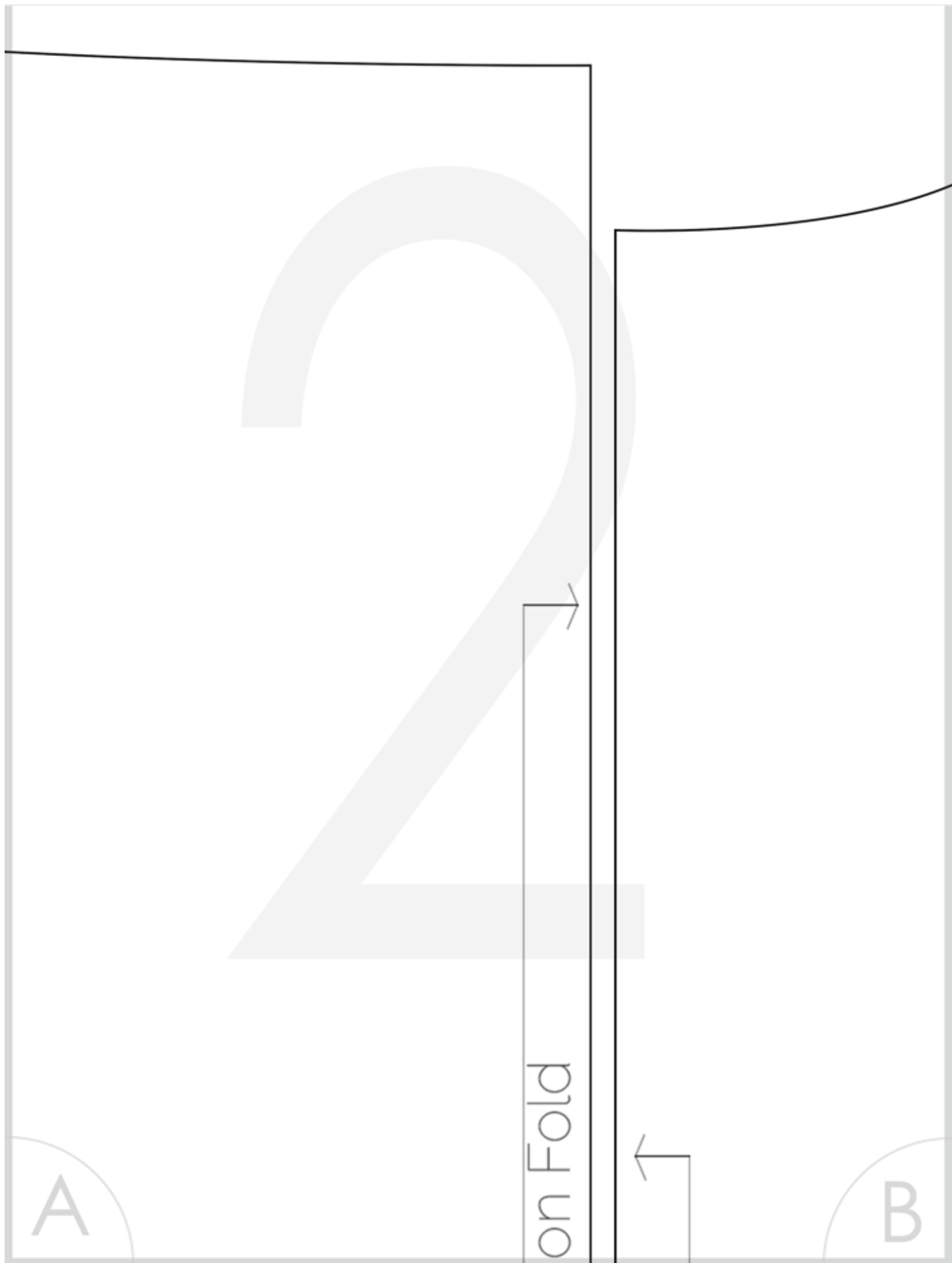
Instructions can be found on Shwinandshwin.com
(search oversized sweatshirt if link won't work)



Printing Guide

Test
Square
1"X1"

A



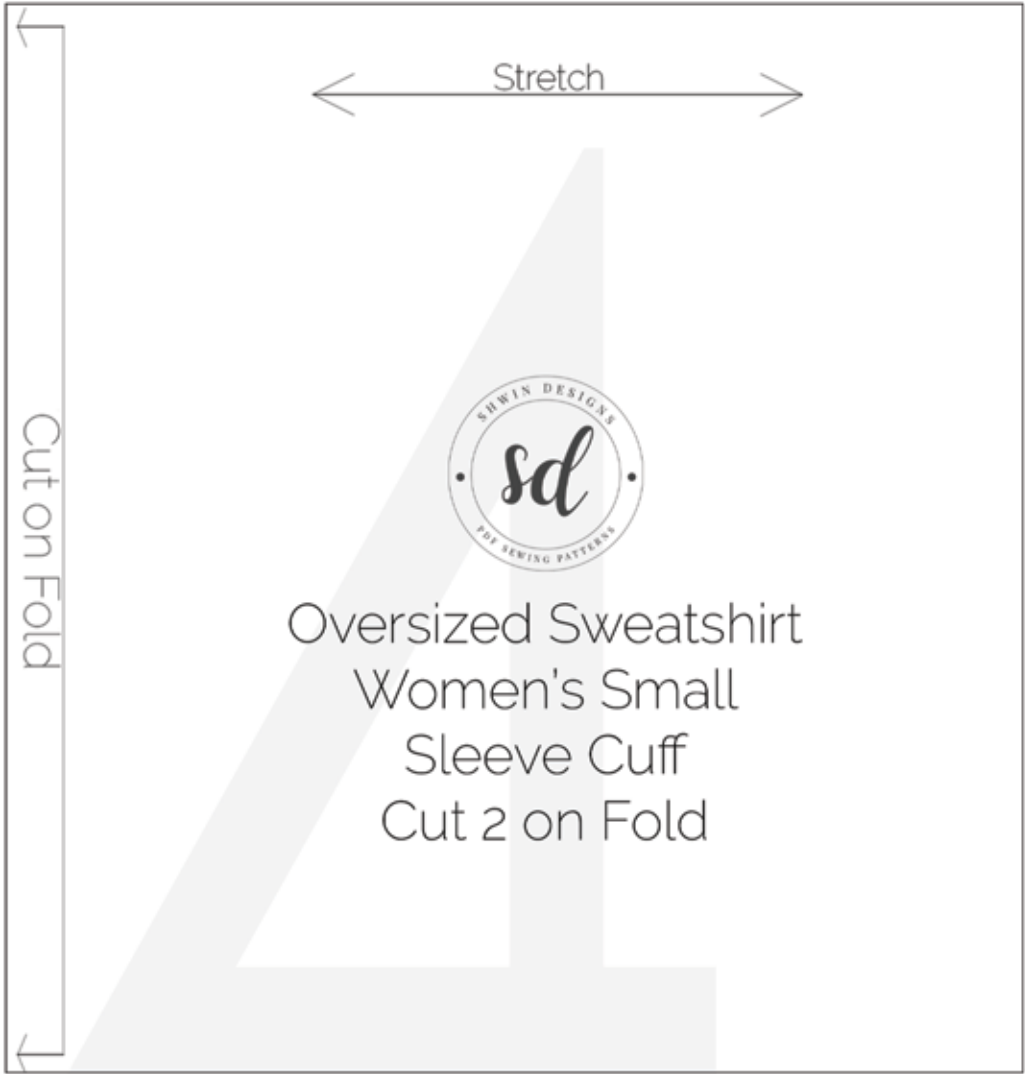


Stretch



B

C



A

Front Bodice
Cut 1 on fold

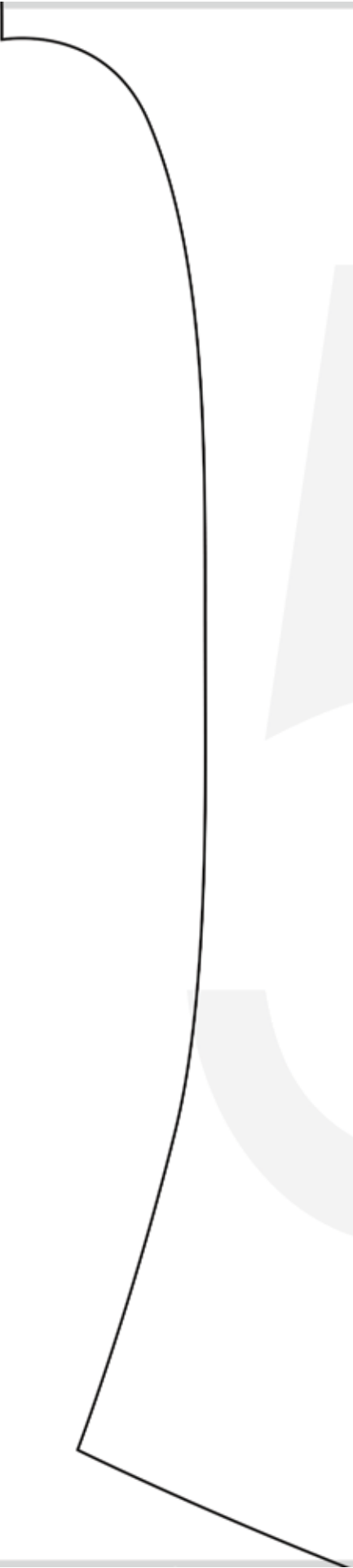
Women's Small
sized Sweatshirt

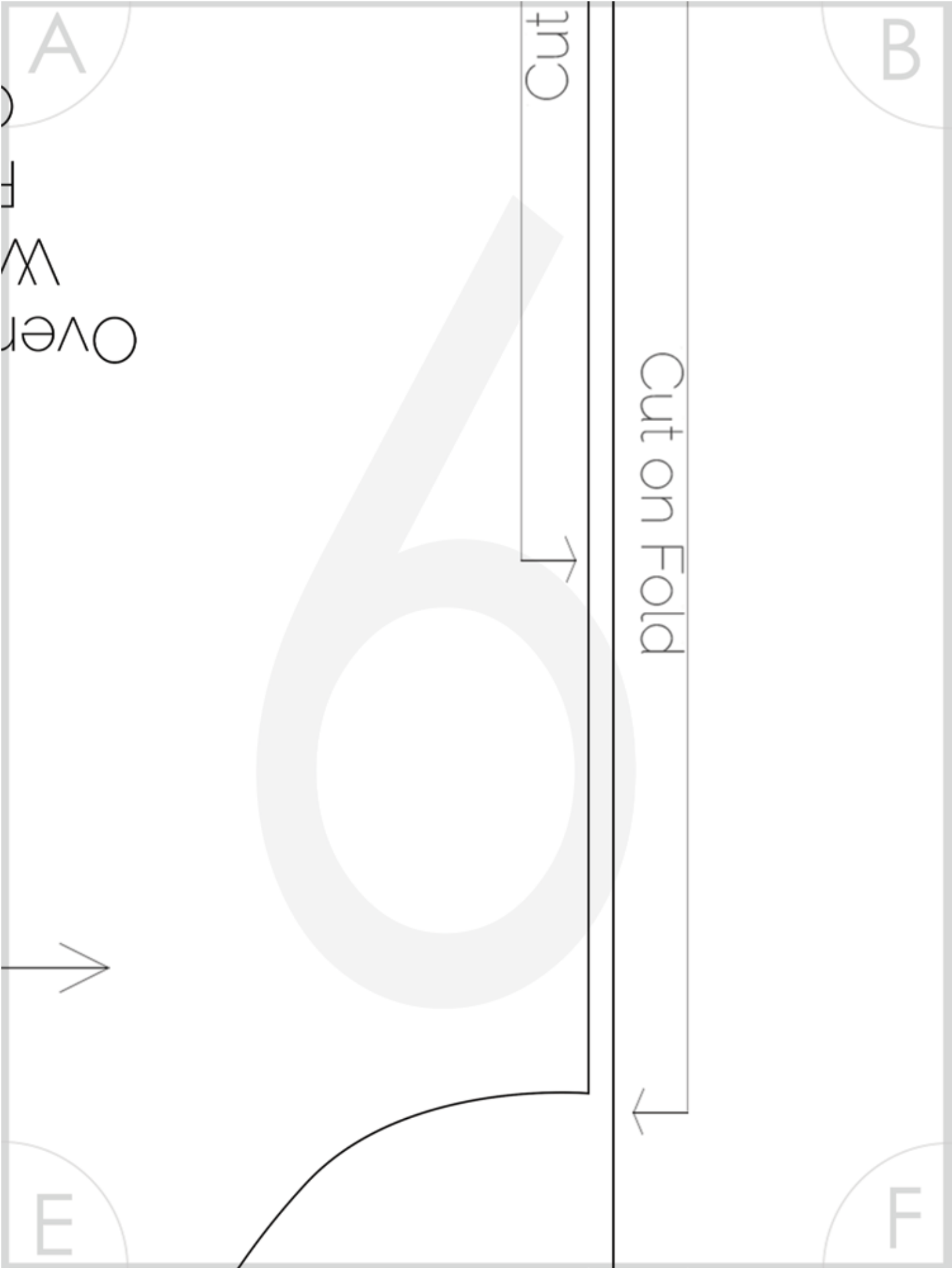


Stretch



E





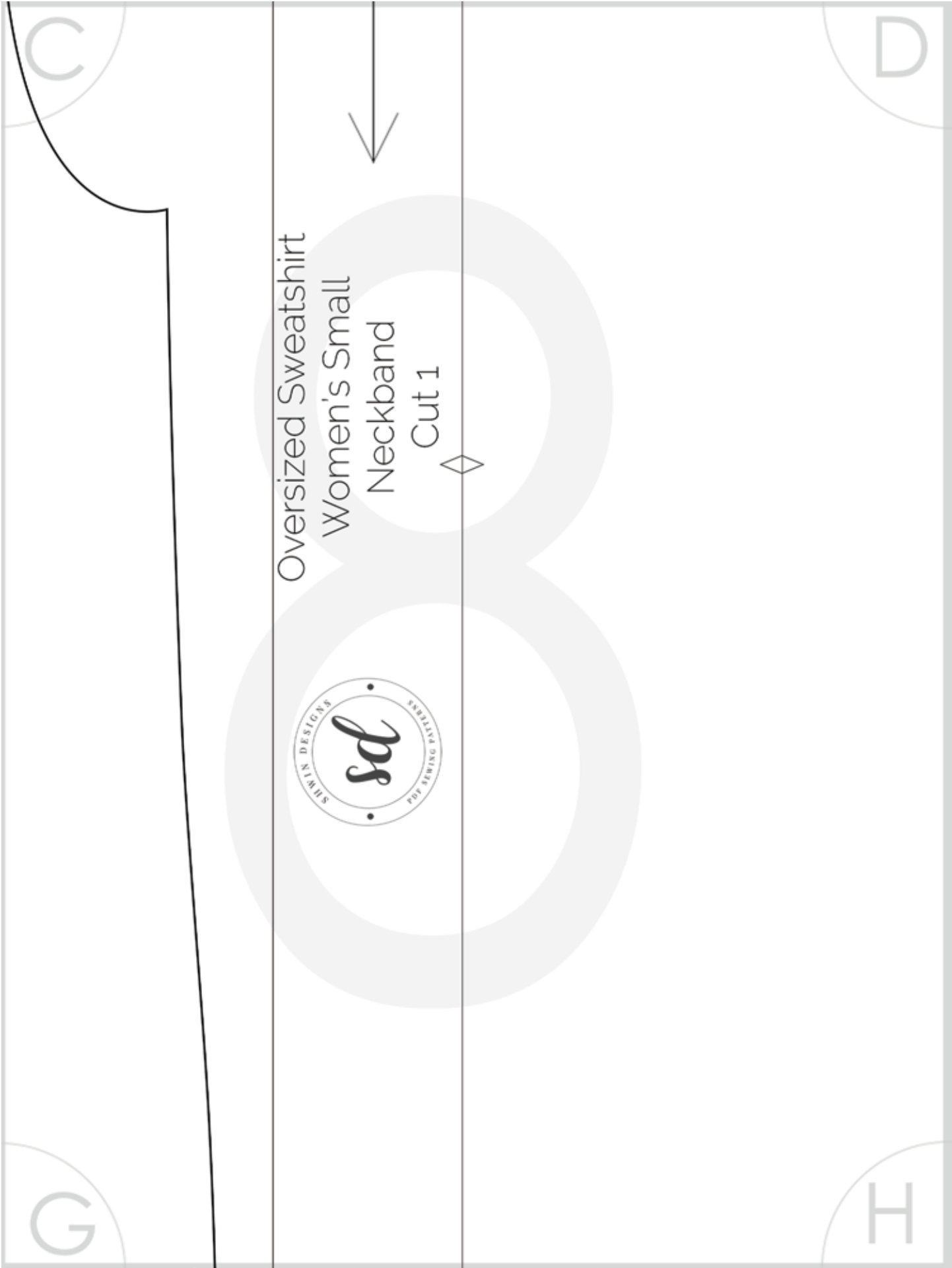
B

C

Oversized Sweatshirt
Women's Small
Back Bodice
Cut 1 on Fold

F

G



Oversized Sweatshirt
Women's Small
Neckband
Cut 1



E



Stretch





Oversized Sweatshirt Women's Small

Sleeve

Cut 2 on fold

Cut on Fold

E

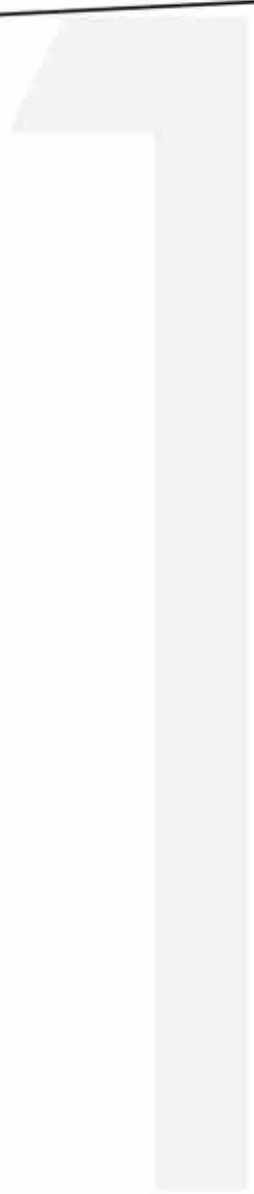
F

I

J

F

G



J



K

G

H

1

2

K